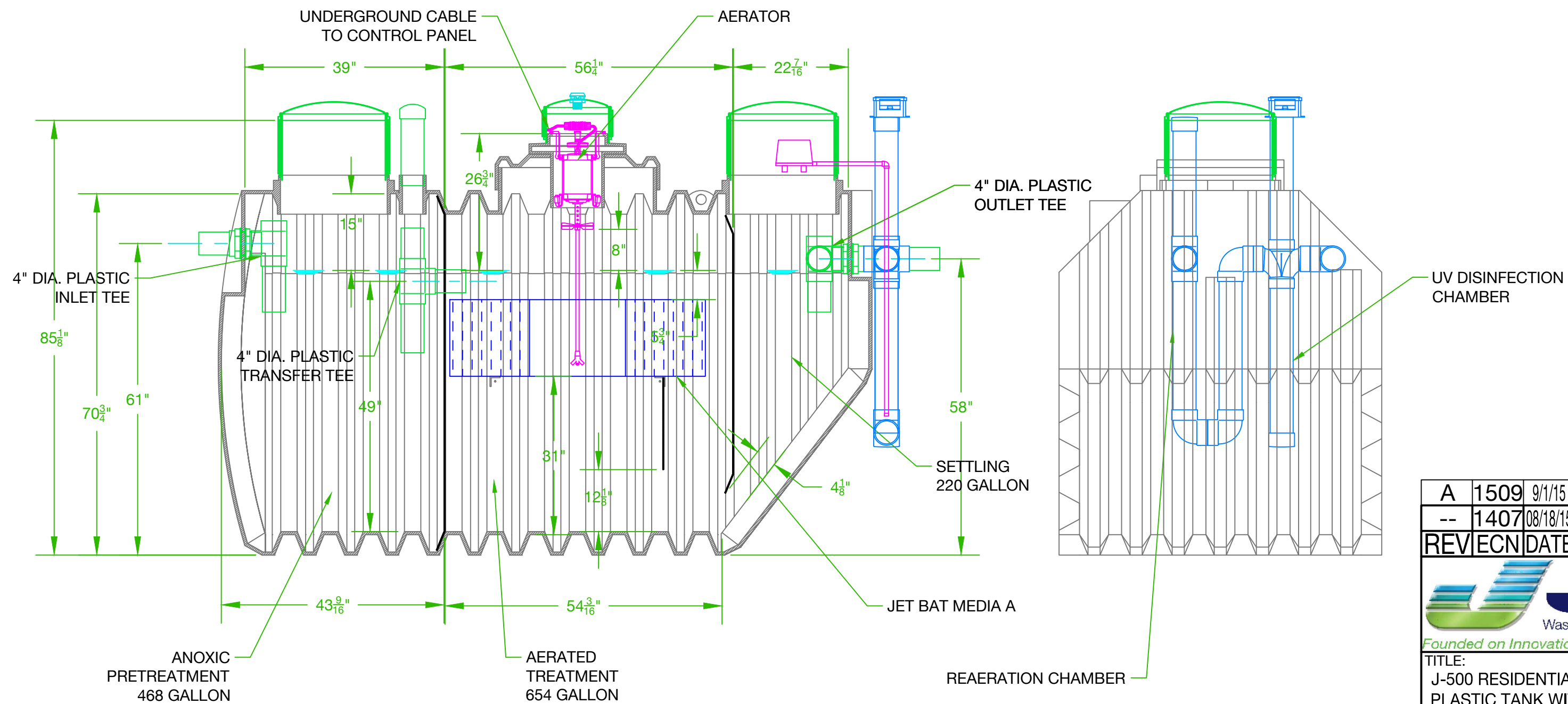
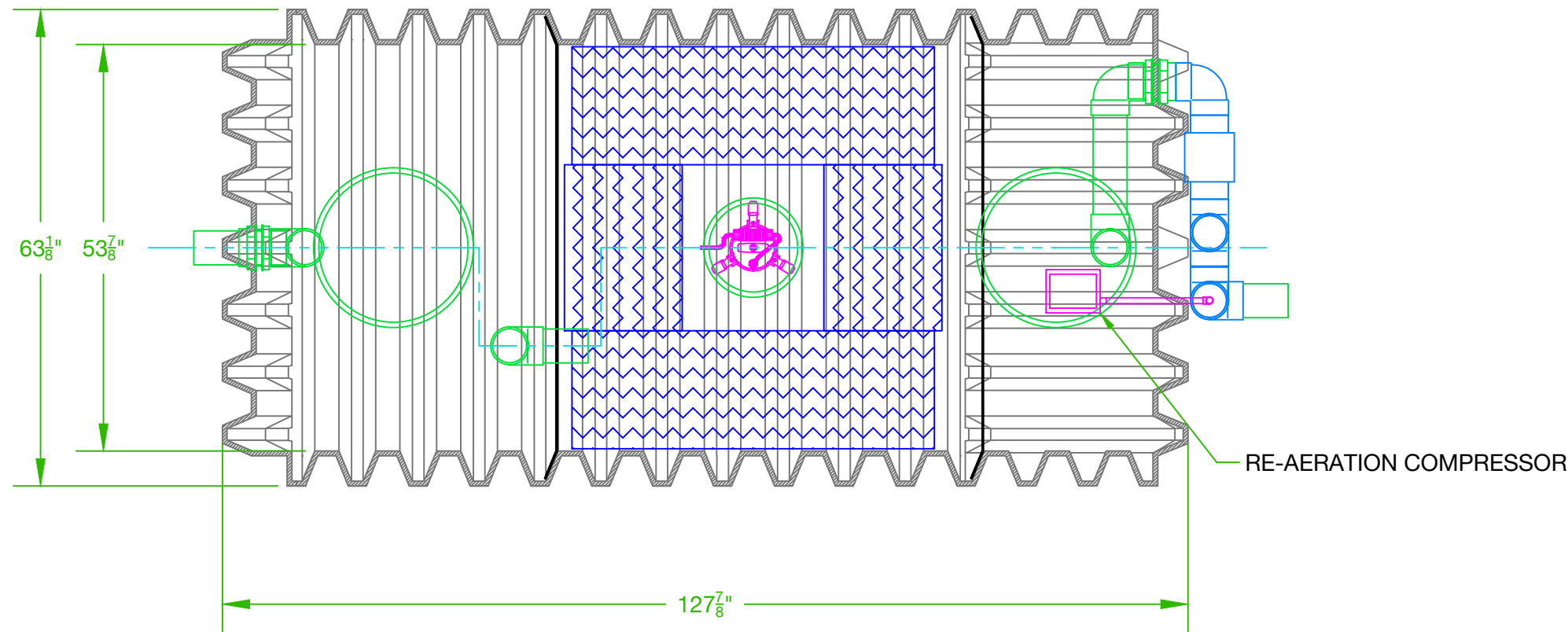



NOTES:

1. AERATOR MODEL 700LL MUST BE USED IN CONTINUOUS OPERATION
2. MAXIMUM BURIAL DEPTH 24" FROM TOP OF TANK
3. J-500 IS CAPABLE OF TREATING UPTO 500 GALLONS OF WASTEWATER WITH AN APPLIED LOADING OF UPTO 0.71 LBS. BOD PER DAY



A	1509	9/1/15	CORRECT OUTLET PIPE HEIGHT	N J K
--	1407	08/18/15	REDRAWN	N J K
REV/ECN	DATE	DESCRIPTION		DRFT/APRV
 Wastewater Treatment Solutions Founded on Innovation. Anchored by Service.®		DRAWN BY: N J K	DATE: 9/1/15	
TITLE: J-500 RESIDENTIAL WWTP PLASTIC TANK WITH UV DISINFECTION AND RE-AERATION		APPROVED BY:	DATE:	
USED ON:		MATERIAL:		
PROPRIETARY PROPERTY: THIS DRAWING IS THE PROPERTY OF JET INC. AND MAY NOT BE REPRODUCED, COPIED OR USED WITHOUT WRITTEN PERMISSION.		SCALE: 1 : 20	SIZE: C	
		UNLESS OTHERWISE SPECIFIED: ALL DIMENSIONS ARE IN INCHES DECIMAL: ± .005 FRACTIONAL: ± 1/64 DEGREE: ± 1°		
		DRAWING NUMBER: J-500-PLT-RAD		
		REV: A		