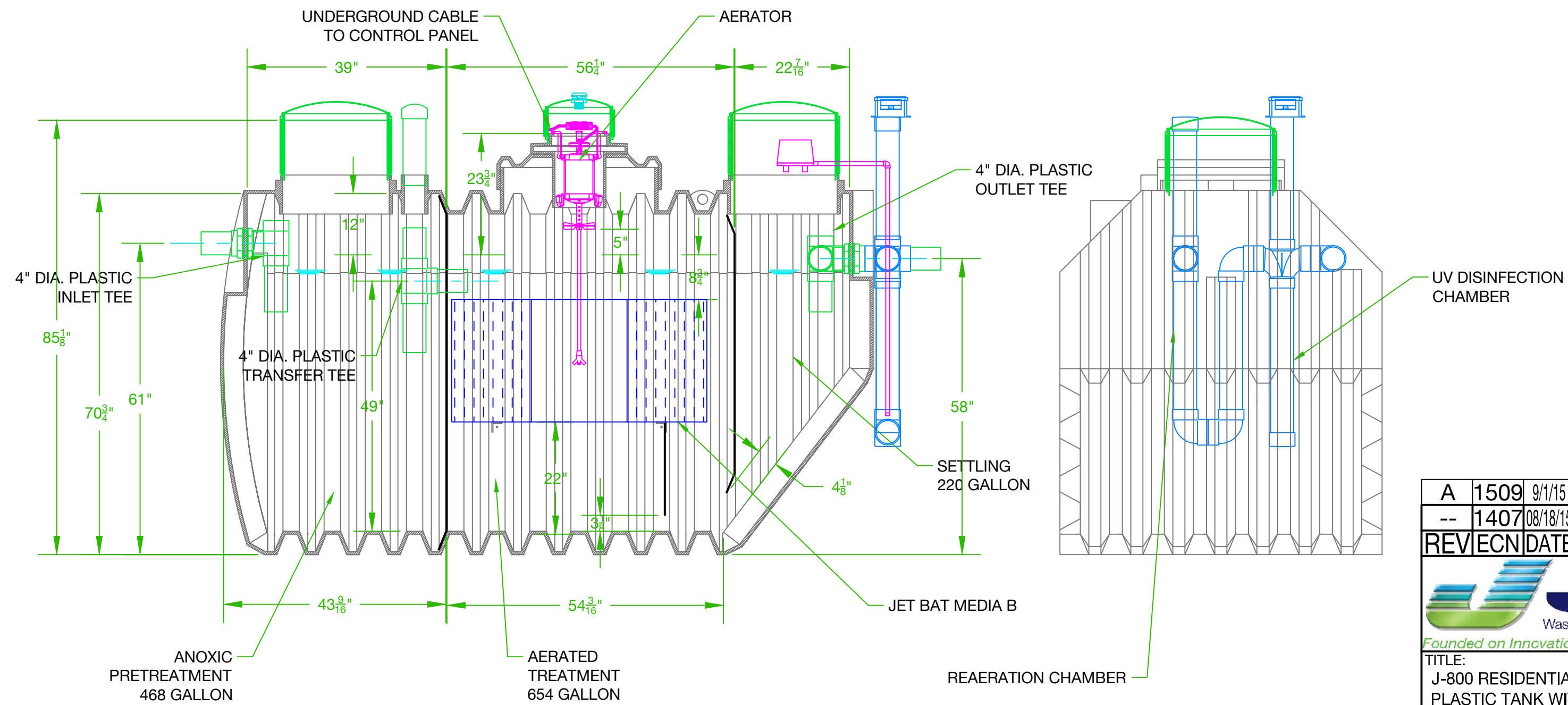
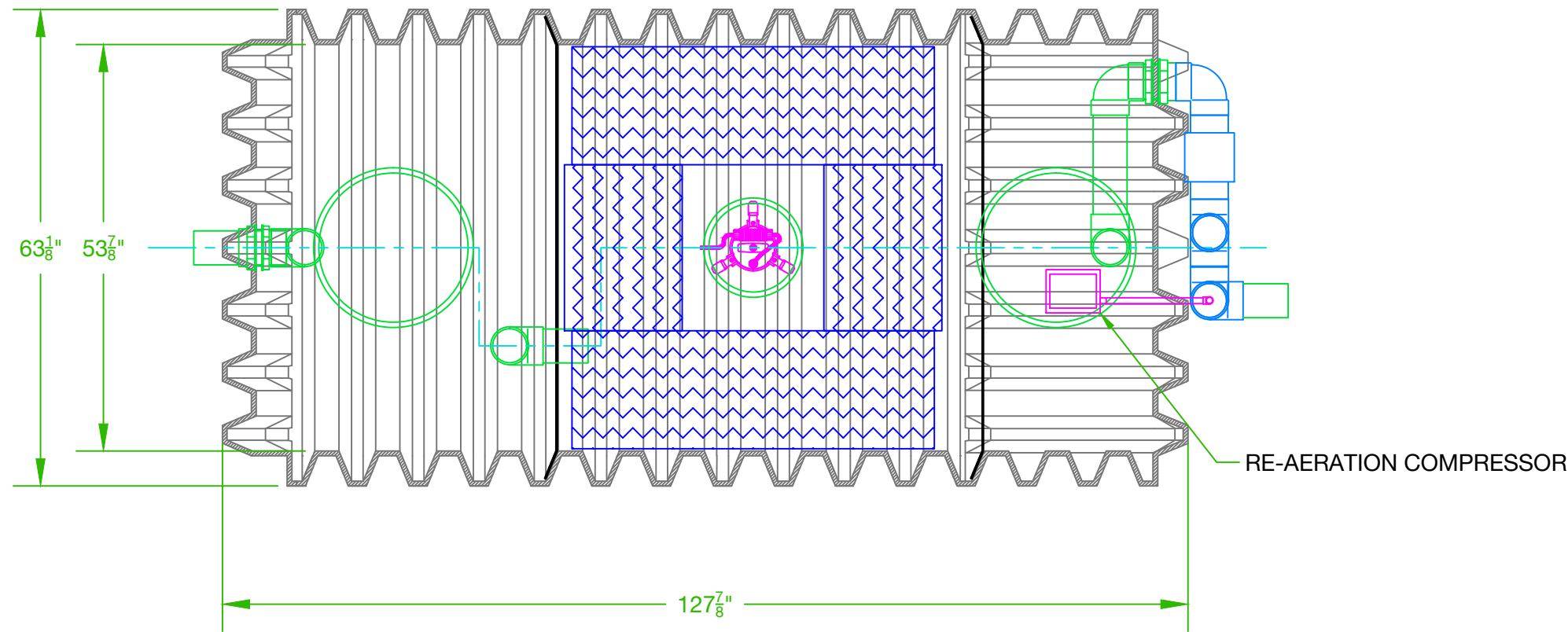



NOTES:

1. AERATOR MODEL 700LL MUST BE USED IN CONTINUOUS OPERATION
2. MAXIMUM BURIAL DEPTH 24" FROM TOP OF TANK
3. J-800 IS CAPABLE OF TREATING UPTO 800 GALLONS OF WASTEWATER WITH AN APPLIED LOADING OF UPTO 1.13 LBS. BOD PER DAY



A	1509	9/1/15	CORRECT OUTLET PIPE HEIGHT	N J K
--	1407	08/18/15	REDRAWN	N J K
REV/ECN	DATE	DESCRIPTION		DRFT/APRV
		DRAWN BY:	DATE:	
		N J K	9/1/15	
		APPROVED BY:	DATE:	
TITLE:		SCALE:	SIZE:	
J-800 RESIDENTIAL WWTP		1 : 20	C	
PLASTIC TANK WITH UV DISINFECTION AND RE-AERATION		UNLESS OTHERWISE SPECIFIED: ALL DIMENSIONS ARE IN INCHES		
USED ON:		DECIMAL:	± .005	
		FRACTIONAL:	± 1/64	
		DEGREE:	± 1°	
PROPRIETARY PROPERTY: THIS DRAWING IS THE PROPERTY OF JET INC. AND MAY NOT BE REPRODUCED, COPIED OR USED WITHOUT WRITTEN PERMISSION.		DRAWING NUMBER:		
		J-800-PLT-RAD		
		REV: A		