



Wastewater Treatment Solutions

Founded on Innovation. Anchored by Service.



If you want to experience
***honest, dependable,
responsive, service-oriented***
wastewater treatment specialists,
you want ***Jet*** - A company founded on
innovation and anchored by ***service***

Commercial Product Catalog

Volume Two



Our Mission Statement:

If you want to experience honest, dependable, responsive, service-oriented wastewater treatment specialists, you want Jet - A company founded on innovation and anchored by service.

Founded in 1955, David S. MacLaren acted on an innovative idea. While working closely with his father, Albert MacLaren, they designed and patented an aerator for family homes that would more effectively treat and dispose of residential wastewater, changing the technology in the wastewater treatment business forever!

A close look at our competitors will highlight how much of an innovator we are as most of the competing concrete tanks are modeled after our design, but they can't copy another Jet innovation, our patented BAT[®] media. This makes Jet the true pioneer and the leader in onsite wastewater treatment both in residential and commercial settings.

Offering a high level of customer service and cutting edge products in an ever changing industry, Jet is the LEADER in wastewater technology. Jet's representatives design, install and service the best products in the industry!

Jet Inc.

750 Alpha Drive, Cleveland, Ohio 44143

Toll Free: 800.321.6960

Phone: 440.461.2000

Fax: 440.442.9008

On the web: www.jetincorp.com

Via email: email@jetincorp.com

Table of Contents

<i>Title</i>	<i>Pages</i>
About Jet - Our Mission	2
Table of Contents	3
Order Form	4
Commercial Systems - How they work	5
AIR-SEAL Diffusers®	7
Commercial Control Panels	9
Equipment Housing	10
Housing Components - Motors	11
Housing Components - Blowers	12
Drive Components - Belts	13
Drive Components - Bushings	13
Drive Components - Sheaves	14
Pressure Relief Valves	14
Air Filters, Filter/Silencers and Silencers	15
Electrical Components	16
Piping	17
Comminutors	18
Bar Screens	19
Weirs	20
Grating and Hardware	21
Polylok Effluent Filters	22 - 25
Commercial Disinfection Systems and Replacement Parts	26 - 29
JET-CHLOR®	30
CHLOR-AWAY®	31
BIO JET-7®	32
3G UV Disinfection Lamp	33 - 34
Geoflow Drip Line	35 - 37
Geoflow Headworks	38

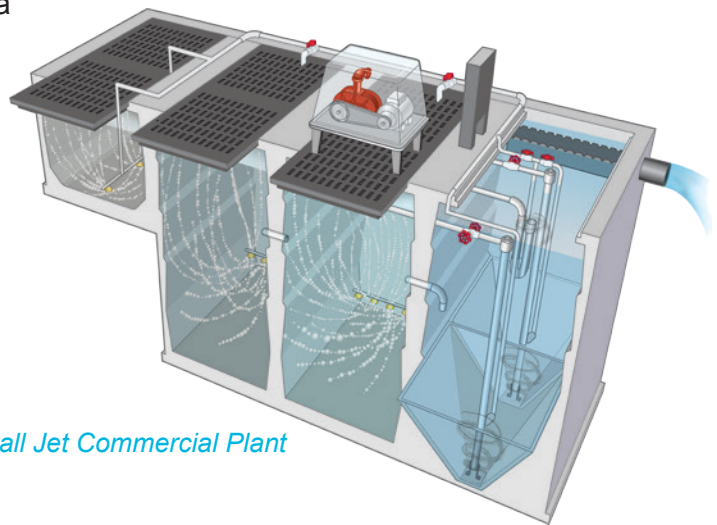
<i>Title</i>	<i>Pages</i>
Geoflow Vortex Filters	39
Geoflow Air Vent & Box	41
Pressure Gauge, Ball Valves and Lockslip Fittings	42
Controllers	43
K-Rain Indexing Valves	44
K-Rain Sprinkler Heads	45
K-Rain Pro Plus Sprinkler Heads	46
Polylok Distribution Box	47
Polylok Risers & Covers	48
Red Jacket Submersible Pumps	49 - 52
Polylok Seals & Mandrels	53
Polylok Boots Seals and Concrete Inserts	54
Polylok Plastic Wheel Chairs	55
Jet Home and Commercial Molds	56
Notes	57
Custom Commercial Plants	58
Sludge Judge	59

Total Pollution Control for Any Facility Built Beyond Sewer Lines

Jet's Package Wastewater Treatment Plants have made it possible for motels, shopping centers and service stations to be constructed along interstate highways far from any town. With a Jet Package Plant: Subdivisions can be developed miles beyond sewer lines; factories can be erected in rural areas; and people can live and work in isolated areas in places throughout the world including the world's deserts, deep valleys and mountain ranges. Ours are time-tested and custom designed plants that treat wastewater through the performance-proven aerobic digestion process that enables microscopic living organisms to transform wastewater into a clear, odorless liquid.

DELIVERING DEPENDABLE AND QUALITY ONSITE COMMERCIAL WASTEWATER TREATMENT SINCE 1955

- Corrosion-free, reinforced concrete tank for durability
- Great for new property development
- Modular in construction supporting a broad range of plant sizes and phased developments
- Configured to meet your specific site requirements
- Capable of processing 1,500 - 100,000 gpd (gallons per day)
- Designed to leverage our patented Jet AIR-SEAL Diffuser® which saves time and money
- Uses the time-tested and proven Extended Aeration Process
- Supported by 24/7 technical assistance: Plant Start-up and Operator Training Available
- Backed by over 50 years in the business of designing wastewater treatment systems



A small Jet Commercial Plant

Why Buy A Jet?

- Jet has been thriving and innovating since 1955. We are the leader in onsite wastewater technology.
- Jet offers assistance with design, engineering and construction.
- Jet offers 24/7 technical support, plant start up and operator training.
- Jet's modular design offers the ability to do phase construction to grow with project demands.
- Jet's plants are great for new commercial developments.
- Jet's plants make it possible for motels, shopping centers, factories, and service stations to be constructed along highways away from city sewer lines.
- Jet's plants are time-tested and custom designed to treat wastewater through the extended aeration process.
- Jet's plants are made of corrosion-free, reinforced concrete for durability.
- Jet's plants are configured to meet your specific site requirements.
- Jet's plants are designed to use our patented Jet AIR-SEAL Diffuser® which saves time & money.
- Jet's plants range in size from 1,500 – 100,000 gpd. (gallons per day)
- Jet's plants are Better for Precasting, Better for Installation, Better for Service.....Simply Better!

Jet AIR-SEAL Diffusers®

ITEM	PART NUMBER
Jet AIR-SEAL Diffuser®	8350472

Top performance, longest possible life, minimum maintenance, complete security and safety... Guaranteed

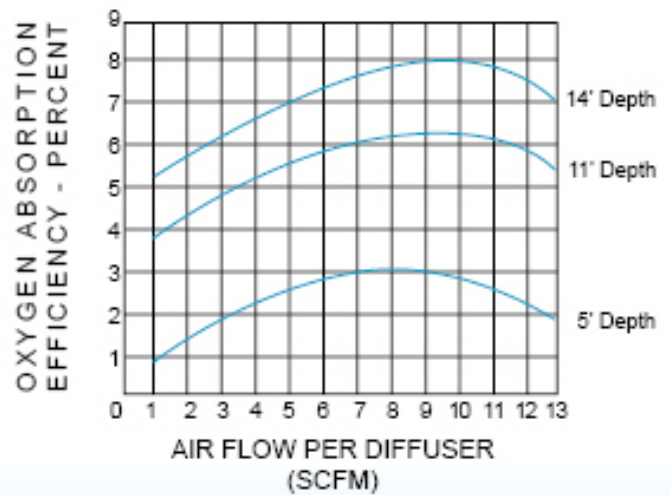
Jet AIR-SEAL Diffusers® are a critical component in most extended aeration applications. The corrosion-free heart of every extended aeration plant is its air diffusion system. Air diffusers introduce large amounts of air for two purposes - to meet oxygen demand of the aerobic digestion process and to mix the tank contents - insuring complete treatment. Jet's unique patented AIR-SEAL Diffuser® offers efficient trouble-free air distribution as proven in over 25 years of field use. It is the one truly non-clog diffuser on the market!

HOW THE JET AIR-SEAL DIFFUSER® WORKS

Air pumped through piping of the plant's diffusion system must be broken into small bubbles for better oxygen transfer efficiency. Streams of air passing through Jet AIR-SEAL Diffusers® are first broken up when passing through the sectioned orifice. Next, the rubber diaphragm blown aside by the force of in rushing air continues breaking up the air stream. Finally, notches at the base of the diffuser break the air into still smaller bubbles giving a greater surface area for more contact with the wastewater. This greater bubble surface area transfers much more oxygen to the wastewater than larger bubbles do. The end result is high oxygen transfer efficiency and mixing action giving a smooth, even, fast aeration process.



Jet AIR-SEAL Diffuser®



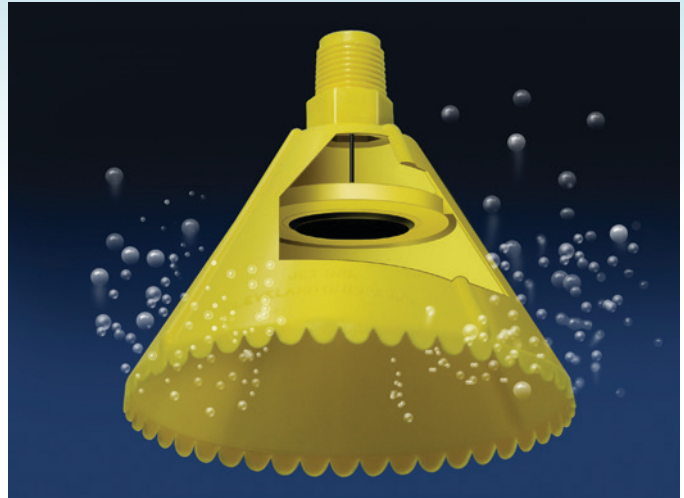
The Only Non-Clog Diffuser You Can Buy

The heart of every extended aeration wastewater treatment facility is its air diffusion system. The diffuser introduces the large amounts of oxygen required to meet the demands of the aerobic digestion process. It also mixes that oxygen with activated sludge in the tank to provide complete treatment. But not all diffusers are the same.

Some are merely pipe pieces with holes drilled to release air. Others use spring-loaded valves. Some are simple porous structures. No matter what they are made from or how they release oxygen into the plant, they all diffuse air upward - and that's why they all quickly clog up. During off-cycle periods when air is not being circulated, solids in the aeration chamber settle to the bottom to clog the diffuser opening. The result: air flow is reduced or completely stopped, and the plant must be shut down so the diffusion system can be cleaned.

Now consider Jet's AIR-SEAL Diffuser.® Its exclusive cone-shaped design causes settling solids to slide down the sloped sides and away from an opening that faces down, not up. When the blower shuts down, the opening is immediately and securely sealed with a rubber diaphragm. A bubble of air is trapped there to prevent any liquids or floating solids from coming into any contact with the diffuser opening. Clogging is made impossible.

No Clogging! No Maintenance! Owners save money because they save labor and replacement parts, and the plant continues to operate at peak efficiency. They can be used on new plants or as replacement parts on existing plants. Jet's AIR-SEAL Diffuser® is simple in design and effective in operation. It is the one truly non-clog diffuser on the market!



Jet AIR-SEAL Diffuser®

The Command Center

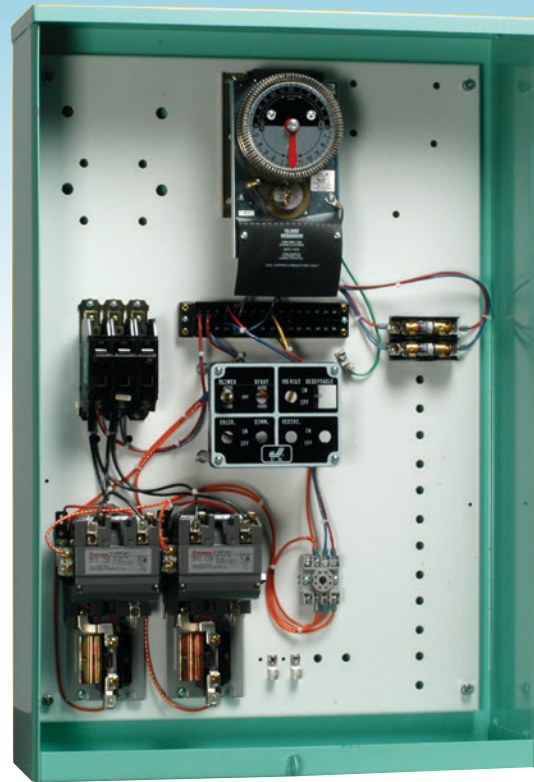
Every Jet Commercial Wastewater Treatment Plant is supplied with a pre-wired electrical control panel that can monitor motor and blower operations, flow, chlorination, spray, pumps and other auxiliary equipment. Whether you would like our traditional panel (pictured to the right) or our new PLC-based version, they all contain proven components that are simple to maintain, operate, and troubleshoot.

All Jet Commercial Plant electrical equipment is monitored here, at the control panel. That equipment is pre-wired at the Jet factory to our exacting quality standards. All switches and controls are clearly identified, and a wiring diagram is furnished with each panel. Before shipment of any control panel, Jet fully tests all mechanical and electrical equipment in order to ensure that all components operate properly.

An optional 24-hour time clock permits automatic cycling of the motor(s) and blower(s).

This clock is preset at the Jet factory to operate the motor(s), blower(s) and foam control for 15 minutes of each half hour. Motors and blowers can be run manually with the toggle switch that is included.

In our 2000 Series plants, the motor, blowers and control panel itself are protected inside a Jet weatherproof, fiberglass equipment housing. Jet 3000 Series plants, a separate weatherproof sheet metal enclosure with an equivalent NEMA 3R rating houses all electrical controls. This enclosure is protected by long-lasting weather resistant paint. Both 2000 and 3000 Series enclosures are secured with master-keyed padlocks.



*Traditional Jet Commercial Control Panel
(A PLC-based version is available)*

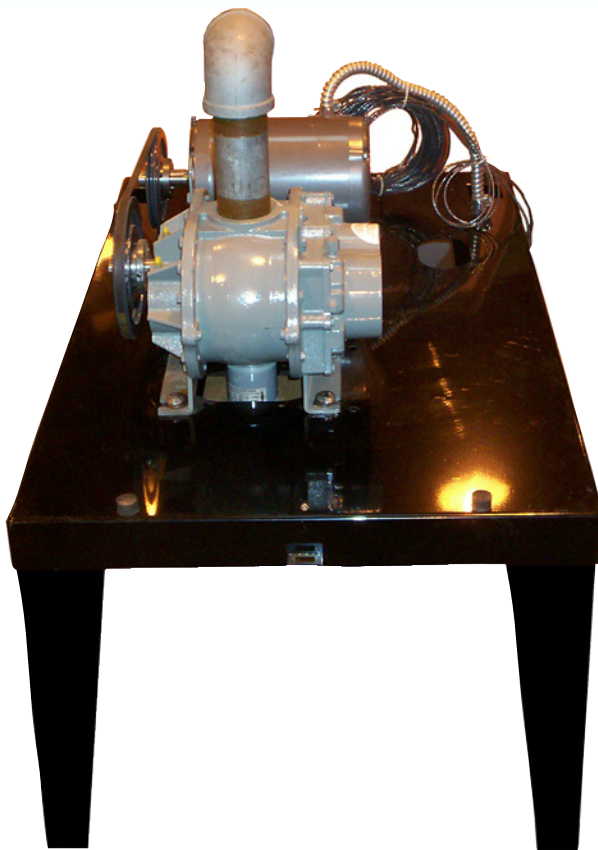
CONTROL PANEL OPTIONS:

- 24-Hour Time Clock
- Flow Recorder
- Test Switch
- 7-Day Time Clock
- 115 V Receptacle
- Foam Control/Spray Option
- Chlorinator Option
- Comminutor Option
- Spare Switch
- Automatic Alternation

Special Order only, call for quote

Equipment Housing

<i>ITEM</i>	<i>PART NUMBER</i>
Equipment Housing & Base without mounting holes	8007015
Equipment Housing & Base with holes for 22 & 33 URAI Blowers	8007023
Equipment Housing & Base with holes for 45 & 56 URAI Blowers	8007049
Cover of Equipment Housing	8000028



Housing Components - Motors

ITEM	PART NUMBER
Motor, 1PH-60 Hz, 1 HP-115/230V, 3450 RPM	8140006
Motor, 1PH-60 Hz, 1½ HP-115/230V, 3450 RPM	8140014
Motor, 1PH-60 Hz, 2 HP-115/230V, 3450 RPM	8140022
Motor, 1PH-60 Hz, 3 HP-115/230V, 3450 RPM	8140030
Motor, 1PH-60 Hz, 5 HP-208/230V, 3450 RPM	8140048
Motor, 1PH-60 Hz, 5 HP-230V, 1800 RPM	8180002
Motor, 1PH-60 Hz, 7½ HP-208/230V, 3450 RPM	8140055
Motor, 1PH-60 Hz, 7½ HP-230V, 1800 RPM	8180010
Motor, 3PH-60 Hz, 1 HP-208-230/460V, 3450 RPM	8150005
Motor, 3PH-60 Hz, 1½ HP-230/460V, 3450 RPM	8150013
Motor, 3PH-60 Hz, 2 HP-208-230/460V, 3450 RPM	8150021
Motor, 3PH-60 Hz, 3 HP-230/460V, 3450 RPM	8150039
Motor, 3PH-60 Hz, 5 HP-208-230/460V, 1800 RPM	8190001
Motor, 3PH-60 Hz, 5 HP-230/460V, 3450 RPM	8150047
Motor, 3PH-60 Hz, 7½ HP-208-230/460V, 3450 RPM	8150054
Motor, 3PH-60 Hz, 7¼ HP-208-230/460V, 1800 RPM	8190019

FEATURES

- Copper windings
- Rotors dynamically balanced
- Ball bearings
- Heavy gauge steel frame construction

APPLICATIONS

General purpose including compressors, pumps, conveyors, fans, machine tools and air conditioning units, etc.



Housing Components - Blowers

ITEM	PART NUMBER
Blower, URAI 22	8050098
Blower, URAI 33	8050106
Blower, URAI 45	8050114
Blower, URAI 56	8050122

Universal RAI® blowers are heavy-duty rotary blowers designed with detachable rugged steel mounting feet that permit easy, in-field adaptability to vertical or horizontal installation requirements. Because of the detachable mounting feet, these units can be easily adapted to any of four drive shaft positions: right, left, bottom, or top. The compact, sturdy design is engineered for continuous service when operated in accordance with speed and pressure ratings.

The basic model consists of a cast iron casing, carburized and ground alloy steel spur timing gears secured to steel shafts with a taper mounting and locknut, and cast iron involute impellers. Oversized antifriction bearings are used, with a cylindrical rollerbearing at the drive shaft to withstand V-belt pull. The Universal RAI® features splash oil lube on the gear end and grease lube on the drive end. ROOTS' exclusive "figure-eight" gearbox design improves oil distribution to maximize gear and bearing life. After testing, the unit is sprayed with a protective paint.

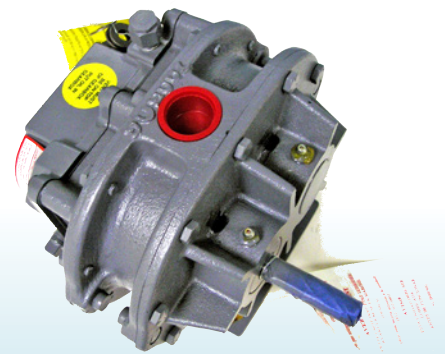
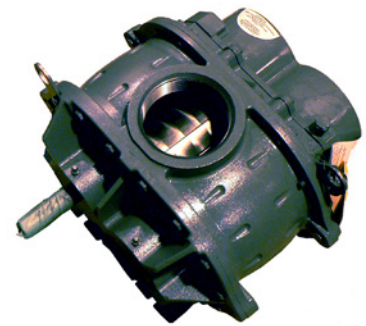
Available accessories include driver, relief valve, inlet and discharge silencers, inlet filter, check valve, extended base, V-belt or flexible coupling and drive guards.



OPERATING PRINCIPLE

Two figure-eight lobe impellers mounted on parallel shafts rotate in opposite directions. As each impeller passes the blower inlet, it traps a definite volume of air and carries it around the case to the blower outlet, where the air is discharged. With constant speed operation, the displaced volume is essentially the same regardless of pressure or temperature. Timing gears control the impellers relative positions and maintain small but definite clearances.

This allows operation without lubrication requirements inside the unit casing.



Drive Components - Belts

ITEM	PART NUMBER
Belt - 3V300	8070443
Belt - 3V315	8070450
Belt - 3V335	8070468
Belt - 3V355	8070500
Belt - 3V375	8070435
Belt - 3V400	8070377
Belt - 3V450	8070476
Belt - 3V475	8070427
Belt - 3V500	8070419
Belt - 3V530	8070484
Belt - 3V560	8070401
Belt - 3V600	8070492

FEATURES & BENEFITS

- Ground form sidewalls reduces vibration and increases belt and bearing life.
- Raw edge sidewalls provide a uniform, anti-slip surface with greater flexibility.
- Wider notch spacing increases rigidity and stability while also reducing the stress on the cord line.
- Fabric Top and Bottom also increases rigidity and stability of the belt.
- "CODE 1" one-match belt system assures that all the belts in the drive carries an equal amount of the load.

APPLICATIONS

- Fans & Blowers
- Ventilation Units
- Agricultural blower units
- Pumps
- Conveyors
- Mixers



Belt

Drive Components - Bushings

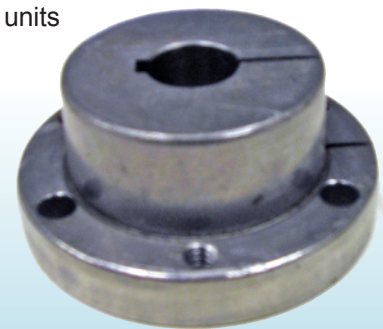
ITEM	PART NUMBER
Bushing, SH, .625	8070203
Bushing, SDS, 1.125	8070211
Bushing, SH, .875	8070229
Bushing, SH, 1.125	8070237
Bushing, SH, .6562	8070245
Bushing, SH, .5875	8070252
Bushing, JA, .625	8070260
Bushing, SDS, .875	8070278
Bushing, SOS, .9687	8070286
Bushing, SM, .750	8070294
Bushing, SOS, .750	8070302
Bushing, SK, .9687	8070310
Bushing, SK, .1.25	8070328
Bushing, SH, 1.375	8070336
Bushing, SOS, .7812	8070344
Bushing, SDS, .6562	8070351
Bushing, JA, .875	8070369

FEATURES & BENEFITS

- Reverse Mounting possible
- 3/4" taper per foot is a self locking taper
- Interchangeable with competitive QD bushings

APPLICATIONS

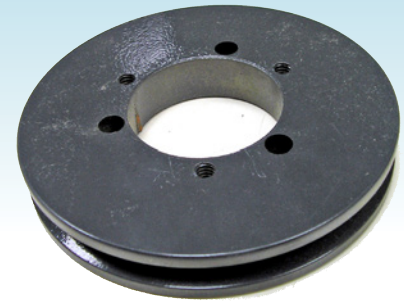
- Fans & Blowers
- Ventilation Units
- Agricultural blower units
- Pumps
- Conveyors
- Mixers



Bushing

Drive Components - Sheaves

ITEM	PART NUMBER
Sheave, 1 groove, JA, 2.65	8070047
Sheave, 1 groove, JA, 2.80	8070062
Sheave, 1 groove, JA, 3.15	8070005
Sheave, 1 groove, JA, 3.35	8070013
Sheave, 1 groove, SOS, 10.6	8070096
Sheave, 1 groove, SOS, 8.0	8070138
Sheave, 1 groove, SM, 3.65	8070120
Sheave, 1 groove, SH, 4.12	8070070
Sheave, 1 groove, SH, 4.75	8070104
Sheave, 1 groove, SM, 5.30	8070179
Sheave, 1 groove, SM, 5.6	8070021
Sheave, 1 groove, SM, 6.0	8070039
Sheave, 1 groove, SM, 6.90	8070054
Sheave, 2 groove, SH, 6.50	8070187
Sheave, 2 groove, SH, 3.65	8070146
Sheave, 2 groove, SH, 4.12	8070088
Sheave, 2 groove, SM, 5.00	8069999
Sheave, 2 groove, SM, 6.00	8070112
Sheave, 2 groove, 5K, 10.6	8070153
Sheave, 2 groove, 5K, 14.00	8070161



Sheave

Pressure Relief Valves

ITEM	PART NUMBER
Pressure Relief Valve, 1 inch	8080012
Pressure Relief Valve, 1 ¹ / ₂ inch	8080020
Pressure Relief Valve Weight - 1 pound for 1 inch valve	8080046
Pressure Relief Valve Weight - ¹ / ₂ pound for 1 ¹ / ₂ inch valve	8080053
Pressure Relief Valve Weight - ¹ / ₂ pound for 1 inch valve	8080038

The pressure relief valve is a type of valve used to control or limit the pressure in a system which can build up by a process upset, instrument or equipment failure, by allowing the pressurized fluid to flow from an auxiliary passage out of the pressure vessel. The relief valve is designed or set to open at a predetermined pressure to protect pressure vessels and other equipment from being subjected to pressures that exceed their design limits.



Pressure Relief Valve

Air Filters, Filter/Silencers and Silencers

<i>ITEM</i>	<i>PART NUMBER</i>
2000 Series Air Filter, 1 inch (blower intake filter)	8200057
2000 Series Air Filter, 2 inch (blower intake filter)	8200065
2000 Series Air Filter, 2 ¹ / ₂ inch (blower intake filter)	8200073
3000 Series Filter/Silencer, 1 inch (blower intake filter/silencer)	8200008
3000 Series Filter/Silencer, 2 inch (blower intake filter/silencer)	8200016
3000 Series Filter/Silencer, 2 ¹ / ₂ inch (blower intake filter/silencer)	8200024
3000 Series Filter/Silencer, 3 inch (blower intake filter/silencer)	8200032
Silencer 1 ¹ / ₂ inch (blower intake silencer)	8230021
Silencer 2 inch (blower intake silencer)	8230005
Silencer 2 ¹ / ₂ inch (blower intake silencer)	8230013
Silencer 3 inch (blower intake silencer)	8230039

INLET SILENCERS

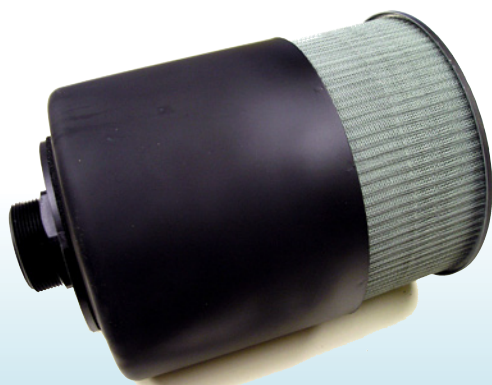
To reduce operating noise in areas where strict noise control is necessary



Filter with Silencer



Filter



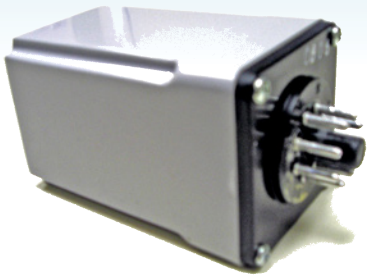
Filter with Silencer



Filter with Silencer

Electrical Components

<i>ITEM</i>	<i>PART NUMBER</i>
Alternator (with wiring for 2000 or 3000 Series Panel)	8297012
Alternator (without wiring)	8210478
115 Volt Receptacle with transformer for 2000 Series	8457020
115 Volt Receptacle with transformer for 3000 Series	8457012
Time Clock, 115/230 V - 1Phase - 60 Hz - 24 hour - 7 days	8300063



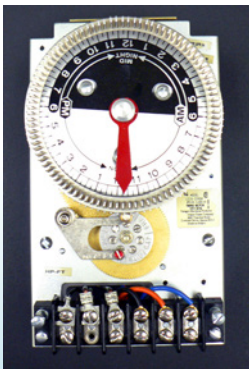
ALTERNATOR

- Solid-state Reliability
- Heavy-duty Contact Rating
- Optional Load 1-Load 2 Toggle
- UL Recognized; CSA Certified
- Indicator lights



115-VOLT RECEPTACLE

To permit use of small power tools, trouble lights, etc., during maintenance of plant. Outlet is fused at 6 amps and a transformer is provided thereby eliminating a separate 115-volt line.



TIME CLOCK

Enables plants to run different time cycles on specified days of the week.

ITEM	PART NUMBER
Diaphragm. Diffuser	8350522
Diffuser Bushing, PVC 1/2" x 1/2"	8350530
Foam Control Nozzles	8430134
Foam Control Nozzle Bushing, PVC Reducer 1/2" x 1 1/4"	8430126
Check Valve, 1 1/4" (for air header)	8100091
Check Valve, 2" (for air header)	8100216
Check Valve, 2 1/2" (for air header)	8100125
Check Valve, 3" (for air header)	8100133
Gas Cock Valve, 1 1/4" (for diffuser drop bar)	8350456
Gate Valve, 2" (for sludge holding)	8350860
Gate Valve, 3" (for sludge return)	8350308
Stop Valve, 3/4" (for skimmer, sludge lift and diffuser air)	8350019
Skimmer Intake Clamp	8350100
Skimmer Intake Pipe	8350092



Diffuser Bushing



Foam Control Nozzle Bushing



Skimmer Intake Pipe



Skimmer Intake Clamp



Foam Control Nozzles



FOAM CONTROL SYSTEM

Pumps clarified liquid from settling chamber through non-clog spray nozzles into Jet aeration chamber to control foaming. Spray pump is a 1/4 HP submersible pump. System includes a wash-water outlet to permit hosing down plant, as well as other routine maintenance.



CHECK VALVE

Check valves are two-port valves, meaning they have two openings in the body, one for fluid to enter and the other for fluid to exit.



Gas Cock Valve



GATE VALVE

Located in each sludge return line to facilitate backwashing procedure on 10,000 gpd plants or larger. Gate valves are constructed of bronze with non-rising stems.



Stop Valve

Comminutors

ITEM	PART NUMBER
5" Comminutors	8427052
8" Comminutors	8427064
12" Comminutors	8427072

GENERAL DESCRIPTION

The comminutor is a motor driven mechanism that reduces the physical size of solids found in the incoming domestic sewage to ¼ inch size or less, thereby avoiding the possibility of clogging pumps.

The comminutor consists of a rotating cylindrical sewage drum with rotating cutter bars, a gear-motor to rotate the drum, a cast aluminum housing which contains the drive shaft and bearings, the stationary cutter comb and an open top cast aluminum trough.

The cutter bars are mounted vertically at equally spaced locations around the exterior circumference of the cylindrical rotating drum. They are spaced to pass through the vertical stationary cutter comb with a close tolerance as the drum revolves, creating a cutting and shearing action between the rotating sewage drum and the stationary cutter comb.

HYDRAULIC OPERATION

Sewage enters the comminutor, passes through the slotted revolving sewage drum and is discharged out of the bottom of the drum.

AVAILABLE MODELS

Comminutors are available in three (3) basic models, all with automatic reversing control panels:

- P-5C, with 6" flange and 5" diameter drum;
- P-8C, with 8" flange and 8" diameter drum;
- P-12C, with 12" flange and 12" diameter drum.

Shaft Extension When a more desirable service and maintenance location for the gear-motor is needed, a shaft extension assembly may be provided. The gear-motor is mounted on a base or cover pipe, located at the end of an extended vertical shaft. For cover pipes over 6' long, lateral support may be necessary.

MODEL	8427052	8427064	8427072
Capacity (gpm)	0-175	0-300	0-850
Power Requirements	Single Phase	11/208/230 volts, 60 cycle	
	Three Phase	208/230/460 volts, 60 cycle	
Service Factor	1.0	1.0	1.0
Drum RPM	35	35	12
Horsepower	0.5	0.5	0.5
Gearbox Ratio	50:1	50:1	50:1
Slot Width	0.25 inch	0.25 inch	0.25 inch
Cutter Teeth	12	16	24
Shipping Weight	150 lbs.	180 lbs	300 lbs.



<i>ITEM</i>	<i>PART NUMBER</i>
Fixed Bar Screen Only	8417024
Fixed Bar Screen with chamber cover	8417016
Removable Bar Screen Basket with support frame	8477010

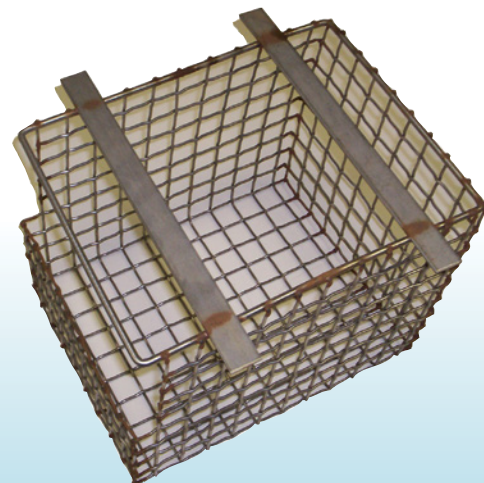
FIXED BAR SCREEN

Has 1" bar spacing with a built-in overflow in case bar screen becomes plugged. Designed for installation in a Jet Comminutor Casting, but can be modified for other installations.



REMOVABLE BASKET SCREEN

Designed to mount at inlet to plant with mounting frame supplied. Catches all solids which will not fit through a 1" square opening. Easily removable for emptying and cleaning. Can only be used on plants 4,000 gpd or larger.

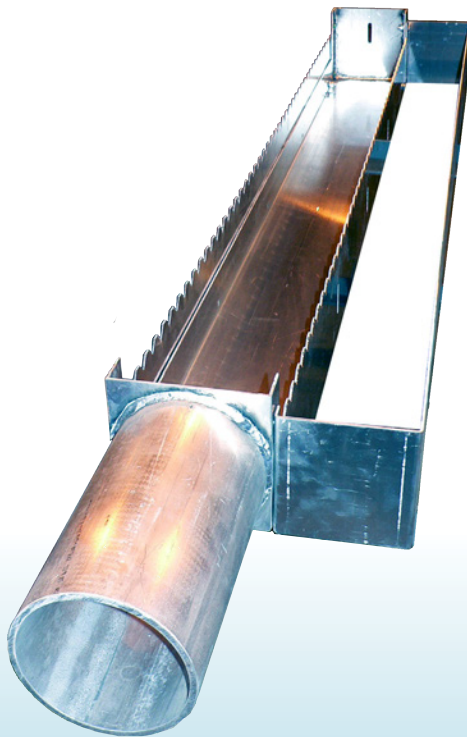
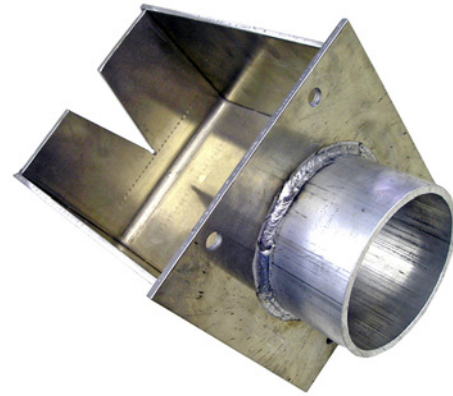


Weirs

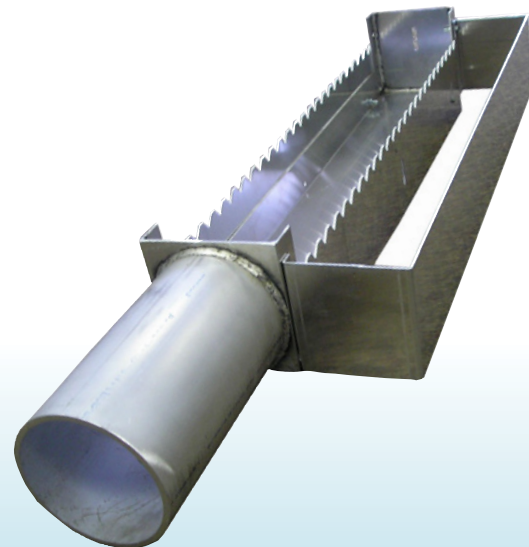
<i>ITEM</i>	<i>PART NUMBER</i>
Flow Measuring Weir 22 ¹ / ₂ degree V-notch without mounting plate	8487050
Flow Measuring Weir 22 ¹ / ₂ degree V-notch Complete	8487019
Flow Measuring Weir 22 ¹ / ₂ degree V-notch without hardware	8460032
Flow Measuring Weir 60 degree V-notch without mounting plate	8487076
Flow Measuring Weir 60 degree V-notch Complete	8487027
Flow Measuring Weir 60 degree V-notch without hardware	8460040
Overflow Weir, V-notch 51 ¹ / ₂ " long (small)	8257016
Overflow Weir, V-notch 81 ¹ / ₂ " long (large)	8257024

FLOW MEASURING WEIR

AV-notch flow measuring weir with a J-hook measuring rod and a calibrated scale to read flow through plant. It is sized according to plant size. Flow measuring weir is installed on outlet of chlorine contact chamber.



Large Weir



Small Weir

Grating and Hardware

ITEM	PART NUMBER
Grating-single sheet without hardware (33 ¹ / ₂ " x 59 ³ / ₄ ")	8270119
Grating-single sheet without hardware (33 ¹ / ₂ " x 23 ")	8270027
Grating-single sheet without hardware (33 ¹ / ₂ " x 11 ⁷ / ₈ ")	8270035
Grating-single sheet without hardware (30 " x 84")	8270020
Grating-single sheet without hardware (27 ¹ / ₂ " x 51")	8270126
Grating Hinge assembly for standard grating (2 hinges per set)	8270167
Grating Hinge assembly for contact chamber (2 hinges per set)	8270407
Grating Lock Hasp & Padlock without lock tab	8270191
Grating Lock Tab for mounting on grating	8270241
Grating Lock Tab for mounting on casting	8270274
Grating Lock Hasp without Lock	8270220



Grating Hinge for Standard grating



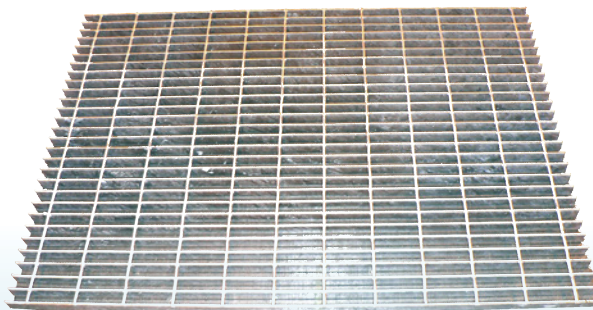
Grating Lock Tab for mounting on grating



Grating Lock Tab for mounting on casting



Grating Lock Hasp w/ padlock



Electroformed Bar Grating is a versatile grating that provides both the rigidity and strength required for light wheel traffic or other moderate loads.

Polylok Effluent Filters

ITEM	PART NUMBER
Plastic Effluent Filter 800 gpd (PL-68) (Special Order)	9520025
Plastic Effluent Filter & Tee 800 gpd (PL-68) (Special Order)	9520026
PL-68 tee baffle (Special Order)	9520027

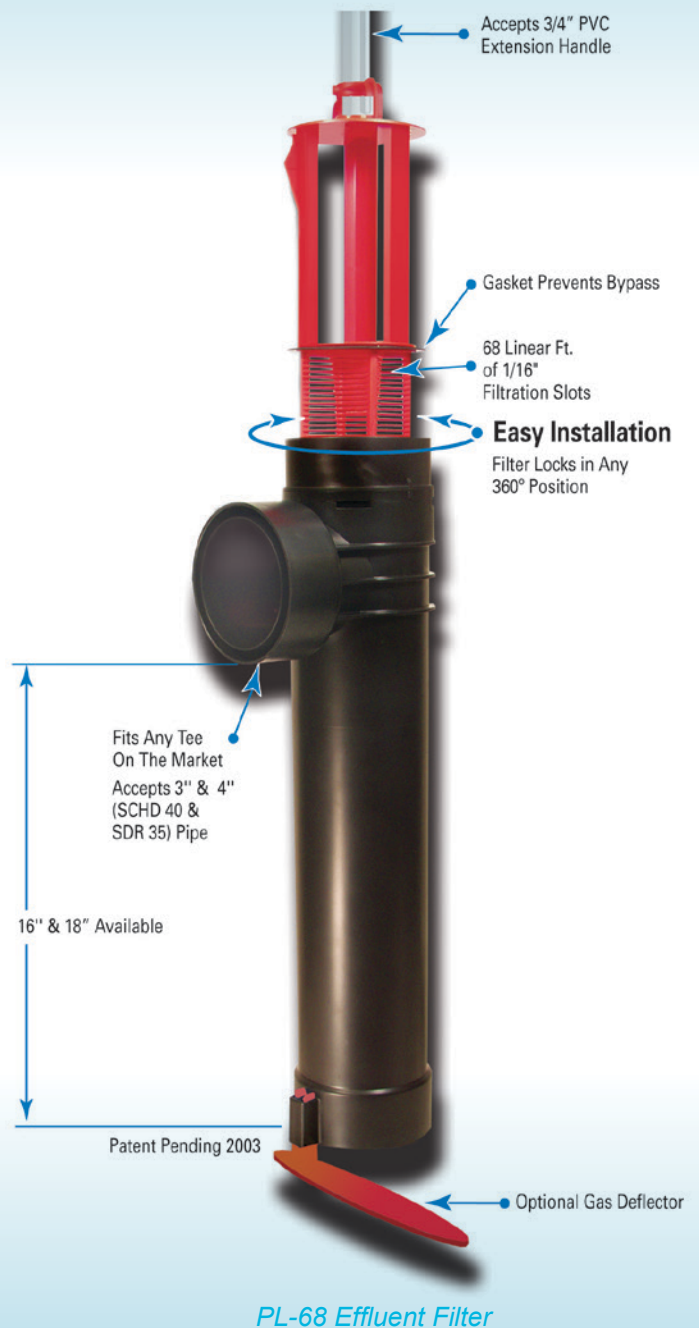
DESCRIPTION - PL-68 EFFLUENT FILTER

The new PL-68 is much more than just an effluent filter. This housing also can be used as an inlet baffle (tee) or an outlet baffle. The housing is designed to accept Polylok's new snap-in gas deflector to deflect gas bubbles away from the tee and to keep the solids in the tank. The housing also can accommodate a high-level alarm switch to notify the homeowner when the filter needs to be serviced.

FEATURES

- Fits in any tee on the market
- 68 linear feet of 1/16" filtration slots
- Accepts 1" PVC handle
- Easy installation
- Locks in any 360° position when used with PL-68 Tee
- Gaskets prevents bypass
- PL-68 Housing can be used as an inlet or outlet tee

The PL-68 Effluent Filter should operate efficiently for several years under normal conditions before requiring cleaning. It is recommended that the filter be cleaned every time the tank is pumped or at least every three years.



ITEM	PART NUMBER
Plastic Effluent Filter 1500 gpd (PL-122)	9520028
Filter Alarm Sensor (Optional)	9520036
Filter Alarm Panel (Optional)	9520037
Plastic Adapter PL-122 Filter	9520029

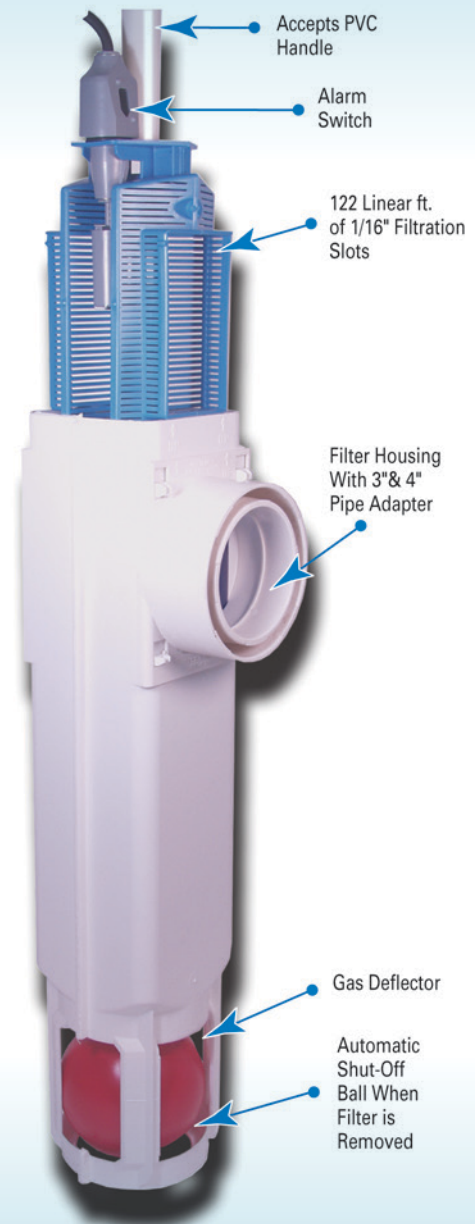
DESCRIPTION - PL-122 EFFLUENT FILTER

The PL-122 was the first filter developed by Polylok. The biggest advantage of this filter is that it has an automatic shut off ball built into every filter. When the filter is removed for regular cleaning, the ball will float up and temporarily shut off the system so the effluent can't leave the tank. To this day, no other manufacturer can make that claim. It is also rated for 1,500 gpd (gallons per day) and is NSF Standard 46 Certified.

FEATURES

- Offers over 122 linear feet of 1/16" inch filter slots
- Has a flow control ball that shuts off the flow of effluent when the filter is removed for cleaning
- Has its own gas deflector ball which deflects solids away
- Installs easily in new tanks, or retrofits in existing systems
- Comes complete with its own housing; no gluing of tees or pipe
- Rated for 1,500 gpd
- Has a modular design allowing for increased filtration
- Accepts 3" and 4" Schedule 40 and SDR 35 Pipe

The PL-122 Effluent Filter should operate efficiently for several years under normal conditions before requiring cleaning. It is recommended that the filter be cleaned every time the tank is pumped or at least every three years. If the installed filter contains an optional alarm, the owner will be notified by an alarm when the filter needs servicing. Servicing should be done by a certified septic tank pumper or installer.



PL-122 Effluent Filter

Polylok Effluent Filters

ITEM	PART NUMBER
Plastic Effluent Filter 1500 gpd (PL-122)	9520028
Filter Alarm Sensor (Optional)	9520036
Filter Alarm Panel (Optional)	9520037
Plastic Adapter PL-122 Filter	9520029

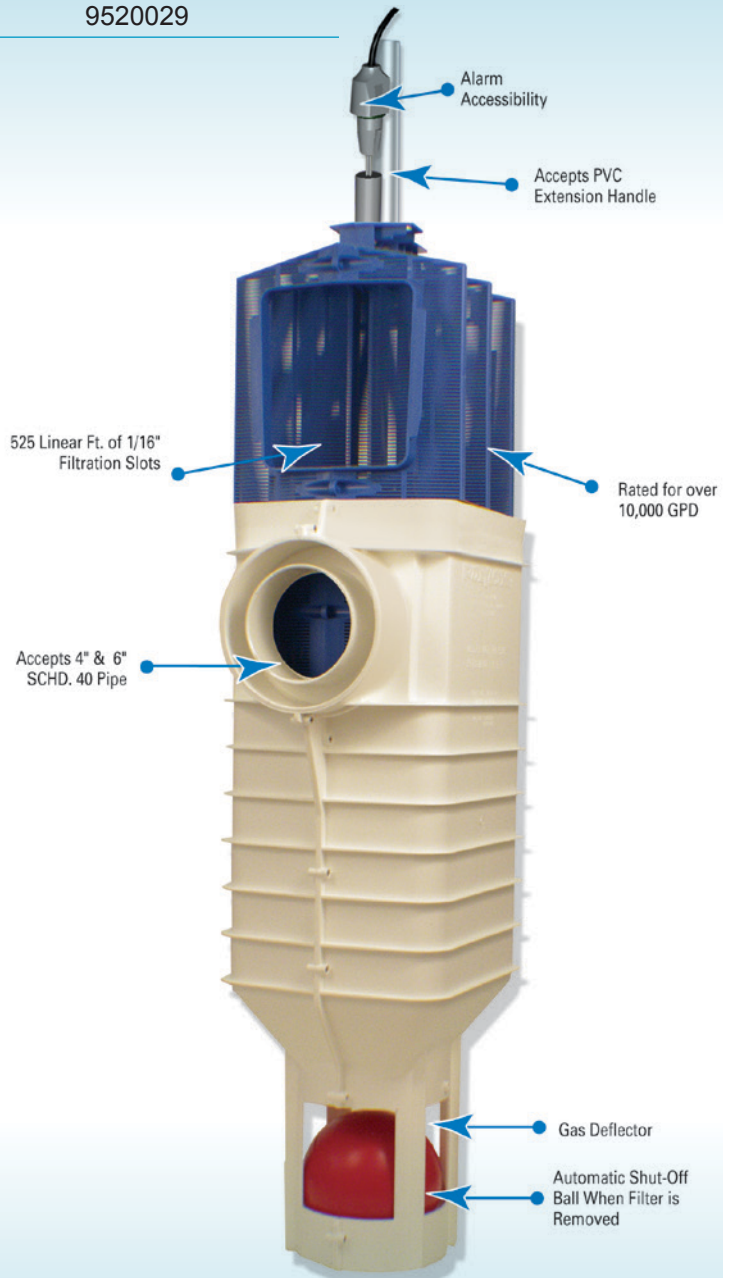
DESCRIPTION - PL-525 EFFLUENT FILTER

Polylok, Inc. is pleased to add its new commercial filter to its existing line of quality effluent filters. The PL-525 is rated for over 10,000 gpd (gallons per day) making it one of the largest commercial filters in its class. It has 525 linear feet of 1/16" filtration slots. Like the Polylok PL-122, the new Polylok PL-525 has an automatic shut off ball installed with every filter. When the filter is removed for cleaning, the ball will float up and temporarily shut off the system so the effluent won't leave the tank. No other filter on the market can make that claim!

FEATURES

- Rated for 10,000 gpd (gallons per day)
- 525 linear feet of 1/16" filtration
- Accepts 4" and 6" Schedule 40 pipe
- Built in Gas Deflector
- Alarm accessibility
- Accepts PVC extension handle
- Automatic shut-off ball when filter is removed

The PL-525 Effluent Filter should operate efficiently for several years under normal conditions before requiring cleaning. It is recommended that the filter be cleaned every time the tank is pumped or at least every three years. If the installed filter contains an optional alarm, the owner will be notified by an alarm when the filter needs servicing. Servicing should be done by a certified septic tank pumper or installer.



PL-525 Effluent Filter

Polylok Effluent Filters

ITEM	PART NUMBER
Plastic Effluent Filter 1500 gpd (PL-122)	9520028
Filter Alarm Sensor (Optional)	9520036
Filter Alarm Panel (Optional)	9520037
Plastic Adapter PL-122 Filter	9520029

DESCRIPTION - PL-625 EFFLUENT FILTER

The PL-625 filter is ideal for grease trap applications. The $\frac{1}{32}$ " filtration has been shown to reduce fats, oils, and grease (FOG) by as much as 60% to 98%! The filter may be used in onsite wastewater systems that require a finer level of TSS removal. Whatever the application, Polylok has the filter for you!

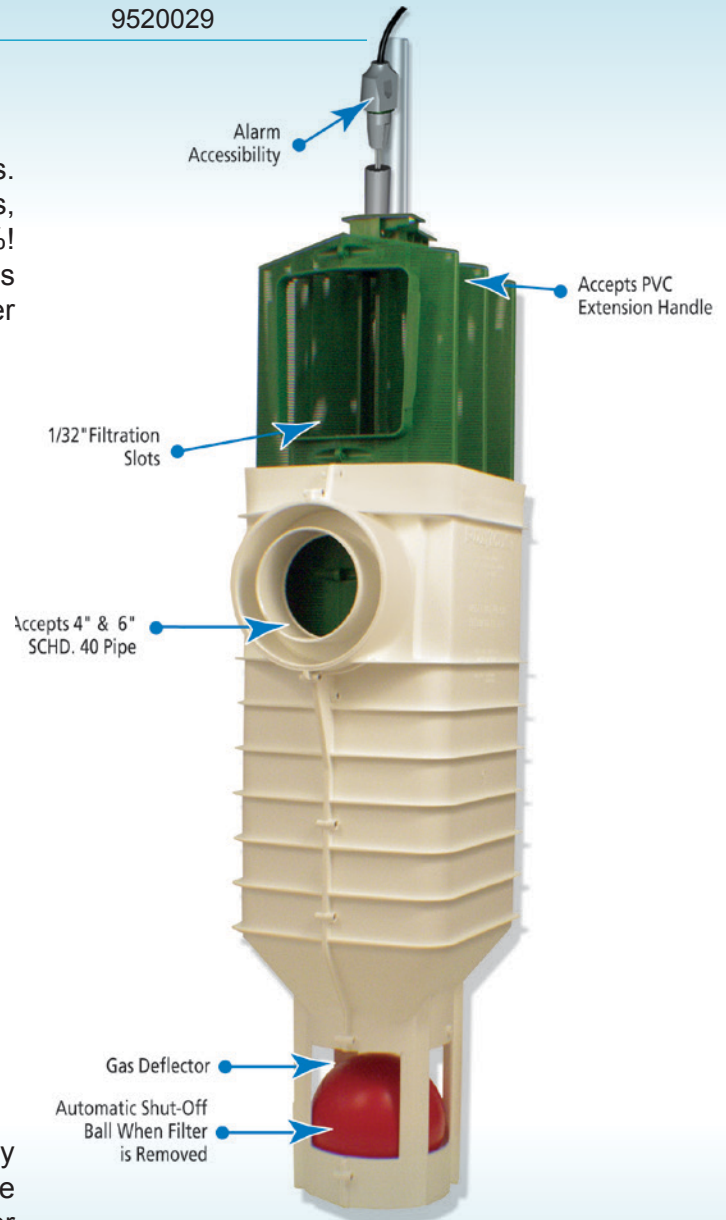
FEATURES

- Rated for 10,000 gpd (gallons per day)
- 625 linear feet of $\frac{1}{32}$ " filtration slots
- Accepts 4" and 6" Schedule 40 pipe
- Built-in Gas Deflector
- Automatic shut-off ball when filter is removed
- Alarm Accessibility
- Accepts PVC extension handle

IDEAL FOR:

- Grease Traps
- Laundromats
- Dog Kennels
- Finer level of TSS removal

The PL-625 Effluent Filter should operate efficiently for several years under normal conditions before requiring cleaning. It is recommended that the filter be cleaned every time the tank is pumped or at least every three years. If the installed filter contains an optional alarm, the owner will be notified by an alarm when the filter needs servicing. Servicing should be done by a certified septic tank pumper or installer.



PL-625 Effluent Filter

Commercial Disinfection Systems

The Commercial Tablet Feeders are self-contained, chlorine dispensing systems designed specifically for the disinfection of effluent from commercial wastewater treatment facilities. Three models are available for chlorination of flows up to 100,000 gallons per day. Easily installed directly in the ground on the discharge line or on the inlet of a chlorine contact chamber, these tablet feeders use no electricity and have no moving parts. Chlorine dosage is automatically adjusted in proportion to the flow. On the larger two models the weir plates are calibrated in both Metric and English and enable the user to tell the flow rate at a glance.

A complete "Installation and Operation" manual containing detailed instruction is supplied with each Commercial Tablet Feeder. This comprehensive manual contains step by step instructions for easy set up, operation and maintenance.

ADVANTAGES OF OWNING A COMMERCIAL TABLET FEEDER:

- **LOW INITIAL COST** - No need for complicated and expensive pumps, mixing tanks, control devices, electrical wiring or piping. The feeder is a simple, non-mechanical, gravity operated device.
- **LOW OPERATING COST** - Uses no electrical power. Labor costs reduced because there is no need for pre-mixing, pumps or control devices to maintain, adjust, repair or replace.
- **WARRANTY** - Each Jet Tablet Feeder carries a 10 year limited warranty against defective materials and workmanship.
- **EFFICIENT** - Chemical dosage is automatically varied in proportion to the flow. Higher flows expose more tablets to the effluent and correspondingly fewer tablets are exposed during periods of low flow.
- **AUTOMATIC (OPERATES UNATTENDED)** - The tablet feeders' unique design insures automatic mixing and chemical transfer 24 hours a day after initial adjustments have been made. It can go long periods of time between restocking.
- **YEARS AND YEARS OF REPAIR FREE LIFE** - The tablet feeders' simple, non-mechanical design has no moving parts to wear. Constructed of tough corrosion-proof plastics. Feed tubes and caps will not melt in the sun because they are protected by an enclosure with ultra-violet inhibitors.
- **SEPARATE ENCLOSURES NOT REQUIRED** - The self-contained and totally enclosed tablet feeder does not require a separate manhole, service box or casing when it is buried. Unique design prevents dirt and water from entering and makes the tubes easy to remove. For deep installations, optional risers are available which extend the tablet feeder to grade.
- **LONG LASTING TABLETS** - Efficient, slow dissolving chemical tablets do not "wick" and contain no dangerous gases, liquids or powders.

HOW IT WORKS:

As the treated wastewater flows through the tablet feeder, it contacts the chlorine tablets which gradually dissolve and slowly release an even and controlled amount of active chlorine into the wastewater. If the flow rate increases, the liquid level in the tablet feeder rises and more tablets are immersed. If the flow rate decreases, the liquid level drops and exposes correspondingly fewer tablets to the effluent.

The rate of chlorination and the chlorine residual can be adjusted and after adjustment they remain constant and in proportion to the flow. If needed, adjustments can be made by varying the number of tablet feed tubes which are filled.

Model 110 & 120 Chlorinator/Dechlorinator

ITEM	PART NUMBER
Model 110 Chlorinator/Dechlorinator	110
Model 120 Chlorinator/Dechlorinator	120

MODEL 110 CHLORINATOR/DECHLORINATOR:

This durable and reliable commercial chlorinator is capable of disinfecting flows up to 50,000 gpd and up to 100,000 gpd when installed in parallel. The maximum flow rate on the Model 110 is 80 gpm (gallons per minute) and 160 gpm when installed in parallel. This unit has a 6 5/8" diameter inlet.

MODEL 120 CHLORINATOR/DECHLORINATOR:

This durable and reliable commercial chlorinator is capable of disinfection flows up to 50,000 gpd and up to 100,000 gpd when installed in parallel. The maximum flow rate on the model 120 is 80 gpm and 160 gpm when installed in parallel. Inlet diameter is variable up to 10".

Both models come equipped with the following:

FEATURES

- **MOUNTING** - each comes equipped with an easy mounting base for easy installation in a chlorine contact chamber
- **MATERIALS** - each is constructed with high density polyethylene, which is chemical and ultraviolet resistant
- **FEED TUBES** - each model contains 4-22 5/8" PVC tubes with a 3" inside diameter and caps. Each tube can hold 27 tablets
- **OUTLET WEIR PLATES** - three outlet weir plates ranging from 1" to 3" are included to regulate effluent level. Each plate is calibrated with Metric and English to enable the user to visually determine the flow rate
- **INLET BAFFLE** - Controls the direction and velocity of flow within the tablet feeder
- **LIMITED WARRANTY** - Every tablet feeder carries a 10-year limited warranty against defective material and workmanship



Model 108 Chlorinator/Dechlorinator

ITEM	PART NUMBER
Model 108 Chlorinator/Dechlorinator	108

MODEL 108 CHLORINATOR/DECHLORINATOR

Capable of disinfecting flows up to 10,000 gpd, a 4 1/2" diameter inlet; lockable; optional risers are available. The maximum flow rate is 35 gpm (gallons per minute).

FEATURES

- **MOUNTING** - Equipped with a mounting base for easy installation in a chlorine contact chamber. For installation on discharge lines, a 4 1/2" inside diameter inlet and outlet are provided.
- **MATERIALS** - Each are constructed with high density polyethylene, which is chemical and ultraviolet resistant.
- **FEED TUBES** - 2 removable PVC tubes, 28" long and 3" inside diameter, with caps. Each tube holds 34 tablets. *It is not recommended filling the tubes to the top.
- **OUTLET WEIR PLATE** - A permanently affixed, outlet weir plate is included to regulate effluent level.
- **INLET Baffle** - An inlet baffle plate to control the direction and velocity of flow within the tablet feeder is supplied.
- **RISERS (OPTIONAL)** - For expanding tablet feeder to grade on deep installations.
- **LOCKABLE COVER** - Can be locked to prevent unauthorized access.
- **LIMITED WARRANTY** - Every tablet feeder carries a 10-year limited warranty against defective material and workmanship.



Replacement Parts

<i>ITEM</i>	<i>PART NUMBER</i>
Cover (100-108)	1050020
Cover (110-120)	1100049
Feed Tube (100)	1000025
Feed Tube (108)	1080084
Feed Tube (110-120)	1100114
Tube Cap	1000058
Screen-Feed Tube	9990268
Tube Support (110-120)	1100056
Lock Bar & Clip (110-108)	1050095
Weir Plate - 1"	1100080
Weir Plate - 2"	1100098
Weir Plate - 3"	1100106



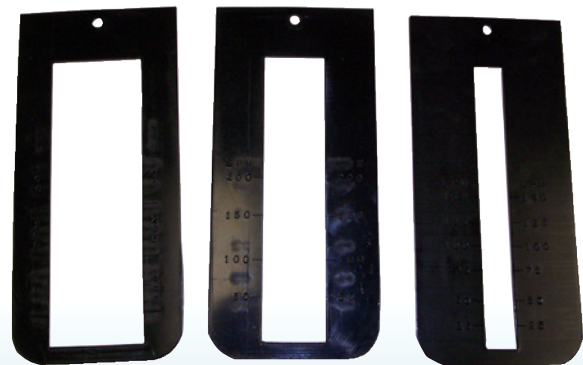
Cover 100-108



Cover 110-120



Feed Tube



Weir Plates 3" 2" 1"

Disinfection Tablets

<i>ITEM</i>	<i>PART NUMBER</i>
Accu-Tab® Tablets 10 lb.	140
Accu-Tab® Tablets 25 lb.	144
Accu-Tab® Tablets 45 lb.	142
Accu-Tab® Tablets 100 lb.	143

PPG Industries is a leading manufacturer of cal-hypo wastewater treatment tablets for private label distributors. Thanks to advanced release technology, PPG now offers the next generation of aerobic wastewater tablets under its own Accu-Tab® brand. Unlike other tablets that contain potentially reactive stearates to control erosion, Accu-Tab wastewater tablets are stearate-free. Developed with Hi-Sil™ H-303 silica, a PPG-engineered, and patent-pending erosion modifier that is safer than stearates, Accu-Tab wastewater tablets allow consistent delivery of chlorine, contain 70% available chlorine and have a smaller diameter to help prevent tablet wicking. Suitable for use in all brands of aerobic wastewater treatment systems. NSF-approved for drinking water.

PPG has manufactured cal-hypo tablets for a variety of water sanitization applications for more than 20 years. Each application requires specific erosion characteristics and PPG satisfies even the most stringent of requirements—including those of the FDA—by controlling every aspect of production: from selection of prequalified material at PPG's plant in West Virginia, through blending with Hi-Sil H-303 silica, to pressing tablets to proprietary specifications. When used as directed in any aerobic treatment system, Accu-Tab wastewater tablets effectively kill bacteria, control algae and destroy organic contaminants.

Accu-Tab® Tablet Benefits:

- Predictable chlorine delivery
- For use in all brands of aerobic wastewater treatment systems
- Beveled edge design minimizes wicking
- Slow dissolve rate
- Kills bacteria
- No mixing of chemicals or solutions



Accu-Tab® in 10 lb. and 100 lb. must ship via freight carrier.

Accu-Tab® in 25 lb. and 45 lb. can ship via UPS.

ITEM	PART NUMBER
CHLOR-AWAY® 25 lb.	171
CHLOR-AWAY® 45 lb.	170

Laboratory-tested and proven, the CHLOR-AWAY® Dechlorination System uses a compact, lightweight Jet Tablet Feeder and long lasting sodium sulfite tablets to remove chlorine in proportion to the flow of treated wastewater.

It is the most practical chlorine removal system available today. Use your CHLOR-AWAY® System to dechlorinate wastewater, cooling tower blow down, boiler water and process water when chlorine or oxidizers are undesirable. In addition to unsurpassed efficiency and effectiveness, the Jet CHLOR-AWAY® System provides all these benefits:

- The Strongest Sodium Sulfite Blend Available - Jet's specially formulated tablets provide the strongest blend of sodium sulfite available in tablet form.
- The Longest Lasting Tablets Available - Efficient, slow dissolving chlorine removal tablets help meet National Pollution Disposal Elimination System (NPDES) permit requirements.
- CHLOR-AWAY® Tablets Fit Other Feeders - Jet's 2 5/8" diameter tablets are designed for Jet Tablet Feeders, but can also be used in other tablet feeders.
- Safe - There are no dangerous gases, liquids or powders to handle or store.
- Every CHLOR-AWAY® System is backed by over 50 years of wastewater treatment experience. We've invested all of this knowledge into the innovation, development, performance testing and manufacturing of the best dechlorination system available today - CHLOR-AWAY®.

Jet's specially formulated CHLOR-AWAY® Tablets provide unsurpassed dechlorination convenience, efficiency and dependability.



BIO JET-7®

ITEM	PART NUMBER
BIO JET-7® 1 Gallon Container	151
BIO JET-7® Case (4 - 1 Gallon Containers)	150
BIO JET-7® 5 Gallon Pail	153
BIO JET-7® 55 Gallon Drum	154



A New Powerful Wastewater Treatment Weapon

BIO JET-7® is a remarkable additive that breaks down and digests grease, fats, soap, scum and other colloidal foams or suspensions. It also dissolves organic materials in both anaerobic and aerobic wastewater treatment systems. In addition to dramatic improvements in oxidizing organic compounds, it promises major cost savings to users. BIO JET-7® keeps household systems operating properly for only pennies a day. The cost is even lower for larger systems. Field performance has proven that plant operating cost savings can be greater than the material cost for regular BIO JET-7® treatments.

BIO JET-7® provides even more benefits including:

Lower operating costs - By improving the oxidation of fats, oils, grease and detergents, BIO JET-7® can reduce aeration capacity required. It can also reduce your need to use chemical settling aids (Polymers), cut your energy costs, save defoamer expenses, cut down on routine maintenance and lower your overall labor costs.

No dangerous chemicals to worry about - Approved for waste related applications by the USDA, BIO JET-7® is non-toxic and will not damage equipment or harm the environment in any way.

An end to noxious odors - Because it can reestablish or enhance normal biological activity in wastewater treatment systems, BIO JET-7® stops organic odors and prevents them from reoccurring, as long as the maintenance program is followed.

Lower effluent BOD and SS - Laboratory tests prove that BIO JET-7® can reestablish and enhance biological activity and improve the reduction of BOD (biological oxygen demand), COD (chemical oxygen demand) and SS (suspended solids) in final effluent. Up to 80% more organic materials have been removed in some systems through BIO JET-7® treatments.

Quick recovery from shock loading - BIO JET-7® helps the system to maintain stability and provides a base for rapid recovery from shock loading.

Reduced hydrogen sulfide generations in gravity flow systems - Lab tests and field performance analysis have revealed that BIO JET-7® reduces hydrogen sulfide in gravity systems. Less hydrogen sulfide means an end to hydrogen sulfide odors as well as a reduction in line corrosion in gravity systems.

Prevents Sewage Backup - By enhancing biological activity in sewers, drain lines, treatment plants, septic tanks and disposal fields and beds, BIO JET-7® reduces the threat of sewage backup and sludge deposits. Because of BIO JET-7®'s composition, clogging mats in leaching fields and beds are soon digested, and efficient drainage can be restored, cutting out the need to replace the field or bed.

Users everywhere agree that this blend of safe, live, non-toxic bacteria overcomes wastewater treatment problems in Residential, Commercial and Municipal wastewater treatment systems.

The Jet UV Disinfection Lamp

The Ultraviolet Disinfection Unit (patent pending) was specifically designed for disinfecting the effluent from small aerobic treatment plants. It is able to reduce fecal coliform bacteria levels well below the most stringent US treatment standards, even when the upstream treatment plant is operating in a mild upset condition.

Most small aerobic treatment plants are installed so that their discharge piping is below grade. The Ultraviolet Disinfection chamber directly couples to the Jet plant 4" discharge pipe and is permanently installed below grade.

The ultraviolet light source for disinfection is mounted in a sub-assembly that can be inserted or removed through the top of the riser pipe for periodic servicing. The light source is mounted in the center of an anodized aluminum frame that divides the disinfection chamber in half. The Kapton® film seals against the inner surface of the disinfection chamber to prevent flow bypass.

When fully inserted, the disinfection sub-assembly is properly located near the top of the disinfection chamber. It causes the wastewater entering one side of the unit to flow vertically downward, make a 180° turn, and then flow vertically upward and out the other side of the unit. This well-defined flow path is designed to give the proper fluid exposure time. The ultraviolet light source is surrounded by a clear fused quartz tube to control lamp surface temperature. When the disinfection chamber is filled with water, the ultraviolet light source can operate continuously, whether or not water is flowing. Continuous operation within a lamp surface temperature range of 105-120° F provides optimum ultraviolet light output and long lamp life.

A fiber optic probe conveys visible light from the ultraviolet light source located underground to an electrical junction box mounted on the outside surface of the riser pipe above grade, allowing

lamp operating status to be confirmed visually without the necessity for removing the disinfection sub-assembly. The disinfection sub-assembly is watertight throughout its length, which extends approximately one foot above grade. This protects the electrical connections against a fluid backup which could cause the wastewater effluent level to rise to the maximum height of the upstream treatment plant.

The UV system operates on 115V AC power and consumes less than 25 watts. The power lead wires attach to a terminal strip inside the junction box. A green LED indicates that the ultraviolet light source is operating.

UV disinfection lamp

<i>ITEM</i>	<i>PART NUMBER</i>
UV disinfection lamp	952
UV replacement bulb	9521001

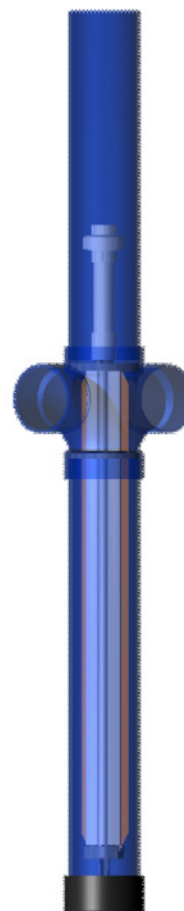
SPECIFICATIONS:

Maximum flow through the unit is rated at 3 gallons per minute (gpm), or 4,320 gallons per day (gpd), with the following effluent conditions:

Suspended Solids < 30 mg/liter
5-day BOD < 30 mg/liter

Under the above conditions, the fecal coliform reduction by the Jet unit exceeds 3-logs, or 99.9%, at the end of the UV lamp life (one year of continuous operation).

Fecal coliform counts in the home aerobic treatment effluent typically range from 800-20,000 per 100ml. The Ultraviolet Disinfection Unit is well designed to disinfect the effluent from home units. There are no adverse effects from over exposing the effluent to germicidal ultraviolet light, because UV disinfection does not form by-products, in contrast to chlorination and other chemical disinfection methods.



UV disinfection lamp assembly

Geoflow Drip Line

DRIP LINE 16 MM - 500 FT. COILS - 1/2 GPH

ITEM	PART NUMBER
With 24" spacing	9500001
With 18" spacing (Special Order)	9500002
With 12" spacing (Special Order)	9500003
With 6" spacing (Special Order)	9500004

HEAD LOSS CHART

PRESSURE	HEAD	WFPC	WFPC	WFPC
		16-2-24	16-2-18	16-2-12
10 psi	23.10 ft.	—	—	—
15 psi	34.65 ft.	321 ft.	260 ft.	174 ft.
20 psi	46.20 ft.	423 ft.	330 ft.	228 ft.
25 psi	57.75 ft.	478 ft.	377 ft.	260 ft.
30 psi	69.30 ft.	535 ft.	415 ft.	288 ft.
35 psi	80.85 ft.	576 ft.	448 ft.	313 ft.
40 psi	92.40 ft.	613 ft.	475 ft.	330 ft.
45 psi	103.95 ft.	651 ft.	501 ft.	354 ft.
50 psi	115.50 ft.	675 ft.	523 ft.	363 ft.
55 psi	127.50 ft.	700 ft.	544 ft.	377 ft.
60 psi	138.60 ft.	727 ft.	563 ft.	403 ft.

Kd = 2.070

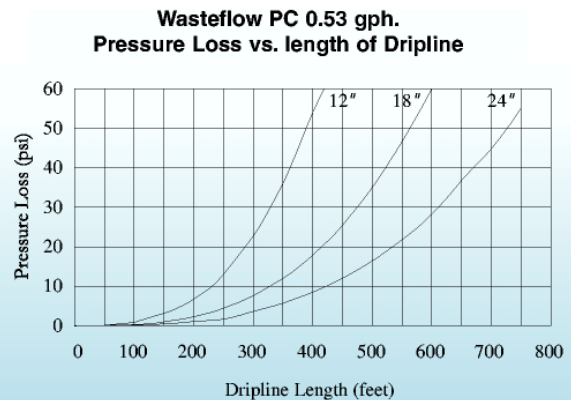
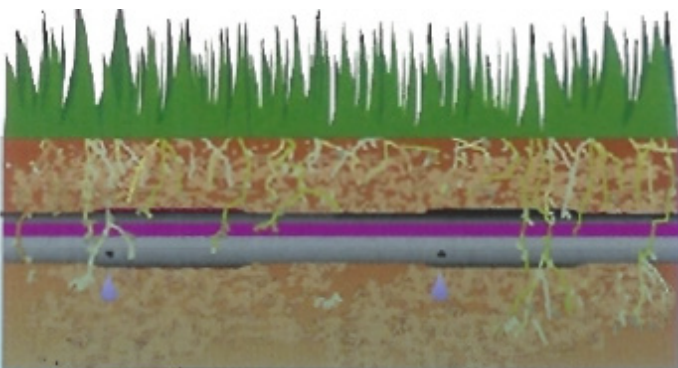
Maximum Length of Run vs. Pressure
 Allows a minimum of 10 psi in the line
 *Recommended operating pressure is 10 - 45 psi

WASTEFLOW PC 1/2 GPH

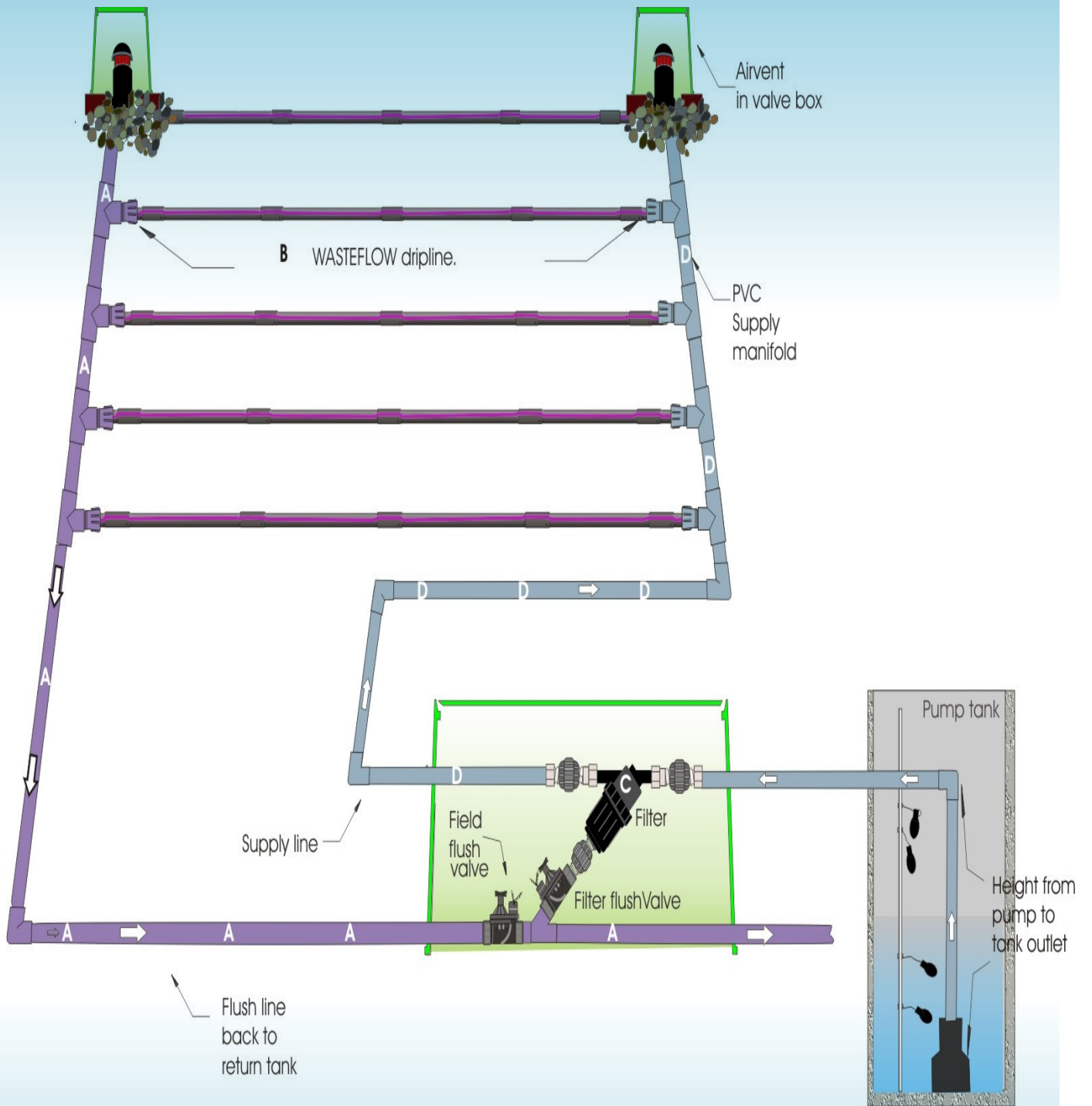
SPECIFICATION

The dripline consists of nominal sized one-half inch linear low density polyethylene tubing, with turbulent flow, drip emitters bonded to the inside wall. The drip emitter flow passage is 0.032" x 0.045" square. The tubing has an outside diameter (O.D.) of approximately .64 inches and an inside diameter (I.D.) of approximately .55 inches. The tubing consists of three layers; the inside layer is a bactericide protection, the middle layer is black and the outside layer is purple striped for easy identification. The dripline has emitters regularly spaced 24" (or 18" or 12" or 6") apart. The pressure compensating emitters are molded from virgin polyethylene resin with a silicone rubber diaphragm. The pressure compensating emitters have nominal discharge rates of 0.53 gallons per hour. The emitters are impregnated with Treflan® to inhibit root intrusion for a minimum period of ten years and are guaranteed by the manufacturer to inhibit root intrusion for this period. 0.53 gph WASTEFLOW.

DRIP LINE INSTALLATION



Geoflow Drip Line Illustration



Geoflow Drip Line

DRIP LINE 16 MM - 500 FT. COILS - 1GPH

ITEM BER	PART NUM-
With 24" spacing	9500005
With 18" spacing (Special Order)	9500006
With 12" spacing (Special Order)	9500007
With 6" spacing (Special Order)	9500008

HEAD LOSS CHART

PRESSURE	HEAD	WFPC 16-4-24	WFPC 16-4-18	WFPC 16-4-12
10 psi	23.10 ft.	—	—	—
15 psi	34.65 ft.	211 ft.	172 ft.	115 ft.
20 psi	46.20 ft.	265 ft.	210 ft.	146 ft.
25 psi	57.75 ft.	315 ft.	242 ft.	171 ft.
30 psi	69.30 ft.	335 ft.	266 ft.	180 ft.
35 psi	80.85 ft.	379 ft.	287 ft.	199 ft.
40 psi	92.40 ft.	385 ft.	305 ft.	211 ft.
45 psi	103.95 ft.	429 ft.	321 ft.	222 ft.
50 psi*	115.50 ft.	431 ft.	334 ft.	232 ft.
55 psi*	127.05 ft.	449 ft.	347 ft.	240 ft.
60 psi*	138.60 ft.	465 ft.	360 ft.	249 ft.

Kd = 2.070

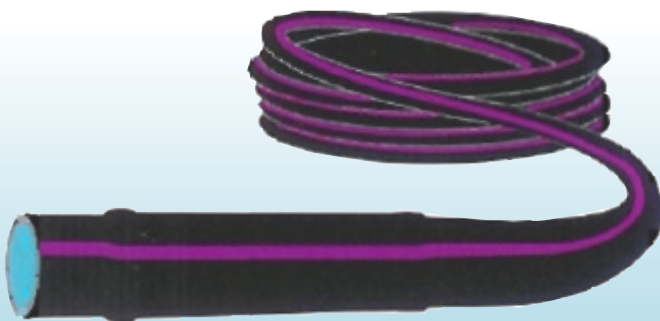
*Maximum Length of Run vs. Pressure
Allows a minimum of 10 psi in the line*

**Recommended operating pressure is 10 - 45 psi*

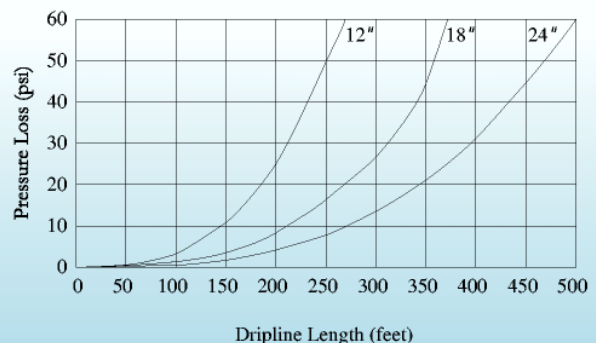
WASTEFLOW PC 1 GPH SPECIFICATION

The dripline consists of nominal sized one-half inch linear low density polyethylene tubing, with turbulent flow, drip emitters bonded to the inside wall. The drip emitter flow passage is 0.032" x 0.045" square. The tubing has an outside diameter (O.D.) of approximately .64 inches and an inside diameter (I.D.) of approximately .55 inches. The tubing consists of three layers; the inside layer is a bactericide protection, the middle layer is black and the outside layer is purple striped for easy identification. The dripline has emitters regularly spaced 24" (or 18" or 12" or 6") apart. The pressure compensating emitters are molded from virgin polyethylene resin with a silicone rubber diaphragm. The pressure compensating emitters have nominal discharge rates of 1.02 gallons per hour. The emitters are impregnated with Treflan® to inhibit root intrusion for a minimum period of ten years and are guaranteed by the manufacturer to inhibit root intrusion for this period.

DRIP LINE ROLL



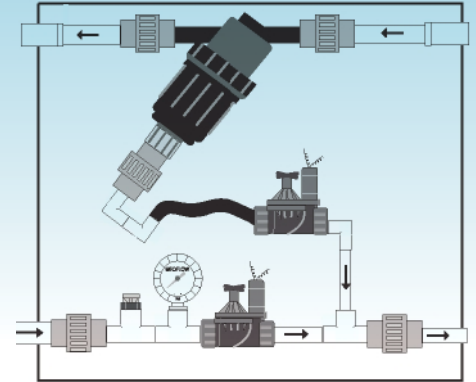
Wasteflow PC 1.02 gph.
Pressure Loss vs. length of Dripline



Geoflow Headworks

ITEM	PART NUMBER
HEADWORKS STANDARD - 3/4" FILTER	
Manual flush valves	9500009
Auto flush valves	9500010
HEADWORKS STANDARD - 1" FILTER	
Manual flush valves	9500011
Auto flush valves	9500012
HEADWORKS STANDARD - 3/4" FILTER GUTS ONLY *	
Manual flush valves	9500013
Auto flush valves	9500014
HEADWORKS STANDARD - 1" FILTER GUTS ONLY *	
Manual flush valves	9500015
Auto flush valves	9500016
Jumbo valve box with no guts	9500017
6" riser for Standard headworks	9500018

Typical Headworks Diagram



* Note: "Guts Only" does not include an enclosure

MODEL	MIN. FLOW	MAX. FLOW
.75" Auto/Man	4 gpm	11 gpm
1.0" Auto/Man	10 gpm	28 gpm

DESCRIPTION

Each headworks box includes the following:

- Vortex filter
- Filter flush valve
- Field flush valve
- Pressure gauge
- Headwork air vent
- Headwork box

Note: Air vents, dripline, and fittings are required to complete the Geoflow disposal system. Pressure regulators are recommended.

OPERATION

Field and filter flushing can be done manually or automatically.

MANUAL HEADWORKS

Both valves should be cracked open slightly at all times to allow a constant flush. Make sure pressure at the Headworks gauge is at least 3 psi, and if not, close the valves slightly to increase pressure. The valves need to be fully open for a complete system flush twice a year.

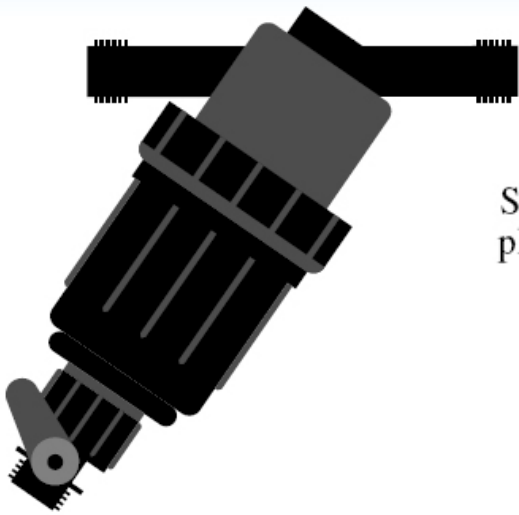
AUTOMATIC HEADWORKS

Both valves are activated electrically. Jet recommends using a GEO controller to activate your flush cycles in the Automatic Headworks.

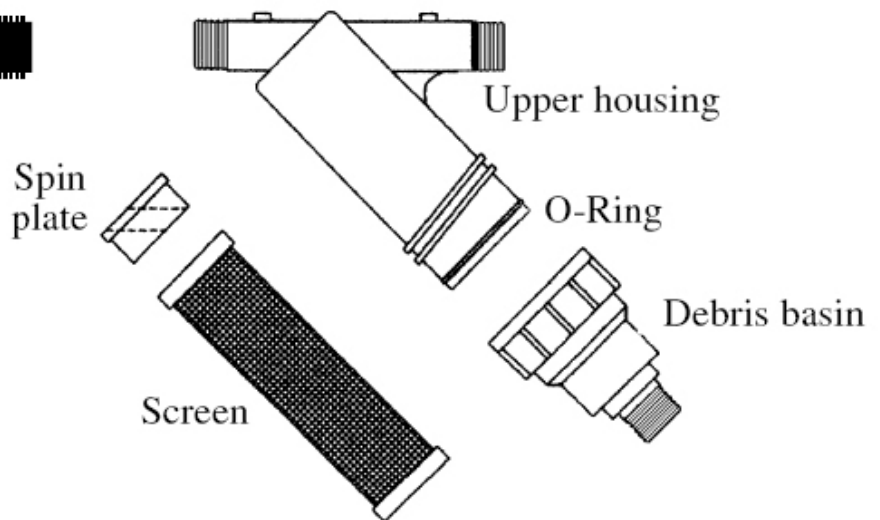
Geoflow Vortex Filters

ITEM	PART NUMBER
Vortex Filter 3/4" MPT Filter, 150 mesh, 4-11 gpm	9500019
Vortex Filter 1" MPT Filter (long body) 150 Mesh, 7-28 gpm	9500020
Screen Replacement 3/4"	9500021
Screen Replacement 1"	9500022
Spinplate Replacement 3/4"	9500023
Spinplate Replacement 1"	9500024

Vortex Filter



Vortex Filter Assembly



OPERATION:

The filters are placed between the pump and dripfield to screen out any debris.

Body - The two-piece threaded housing with O-ring seal is molded from high heat ABS and chemical resistant glass reinforced plastic.

Screen - Constructed of sintered stainless steel. Sintering is a process in which three pieces of stainless steel mesh are transformed into one; a perforated plate, 30m then 150 mesh. Screen collars molded from vinyl for long life and durability.

Spin Plate and drain - Directional spin plate is molded of PVC or fiberglass.

Vortex Spin Action - Incoming water is forced through a directional nozzle plate onto the inside of the stainless steel screen. A centrifugal motion starts inside the screen chamber, throwing organic and inorganic particles outward against the screen. Gravity moves the debris down the screen wall to the 3/4" flush outlet at the base of the Vortex Filter.

To stay clean, two criteria must be met:

- Flow into the filter must be within the specified range to produce a 5 to 8 psi pressure differential across the filter.
- The filter flush valve must be partially to fully open allowing debris to flush away.

Geoflow Vortex Filters

JET PART NUMBER	ITEM NUMBERS	SIZE (MIPT)	FLOW (GPM)	MAX. PRESSURE	WIDTH thread to thread	HEIGHT with flush port	SIZE OF FLUSH PORT	AREA OF FILTRATION
9500019	AP4E-75	3/4"	04 - 11	80 psi	6.0"	12.0"	3/4" MPT	23.4 inches
9500020	AP4E 1F long	1.0"	07 - 28	80 psi	6.5"	13.0"	3/4" MPT	28.4 inches

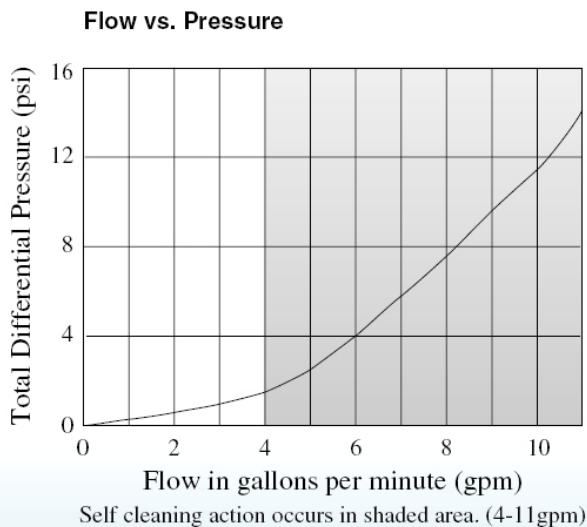
9500019 - 3/4" FILTER

The Y filter body is molded from glass reinforced engineering grade black plastic with a 3/4 inch male pipe thread (MIPT) inlet and outlet. The two piece body is capable of being serviced by untwisting and includes an O-ring seal. An additional 3/4 inch MIPT outlet is available for periodic flushing. The 150 mesh filter screen is all stainless steel, providing a 23.4 square inch filtration area.

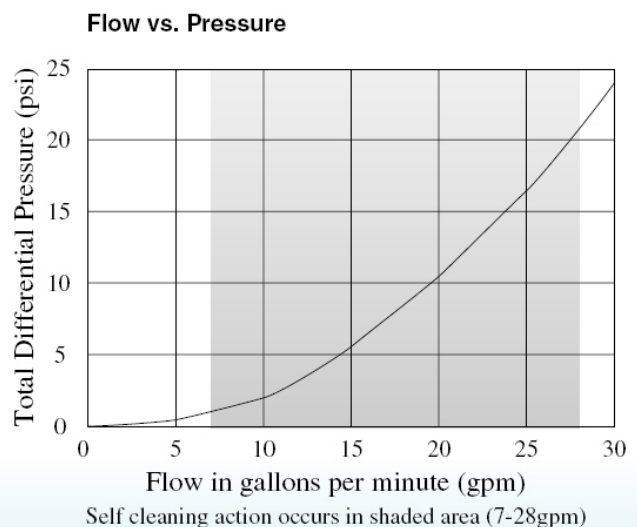
9500020 - 1" LONG FILTER

The Y filter body is molded from glass reinforced engineering grade black plastic with a 1 inch male pipe thread (MIPT) inlet and outlet. The two piece body is capable of being serviced by untwisting and includes an O-ring seal. An additional 1 inch MIPT outlet is available for periodic flushing. The 150 mesh filter screen is all stainless steel, providing a 28.4 square inch filtration area. The screen collar is molded from vinyl.

9500019 - 3/4" Filter Flow Rate Chart



9500020 - 1" Filter Flow Rate Chart



Air Vacuum Breaker

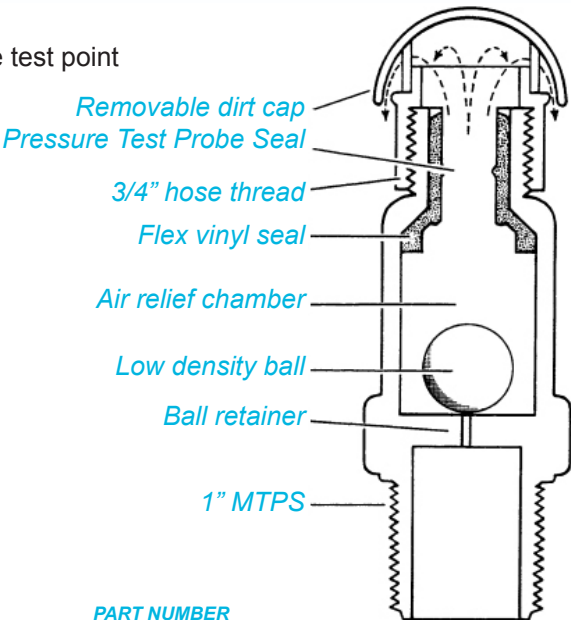
DESCRIPTION

Air Vacuum Breakers are installed at the high points of the WASTEFLOW dripfield to keep soil from being sucked into the drip emitters due to back siphoning or back pressure. This is an absolute necessity with underground drip systems. They are also used for proper draining of the supply and return manifolds in freezing conditions. Use one on the high end of the supply manifold and one at the high point of the flush manifold and any other high points in the system.



- Instant and continuous vacuum relief
- Non-continuous air relief
- Readily accessible pressure test point
- Durable, weather resistant
- Seals tight at 5 psi
- Easy to install
- Removable dirt cover
- Maximum flow of 50 gpm

Air Vacuum Breaker Diagram

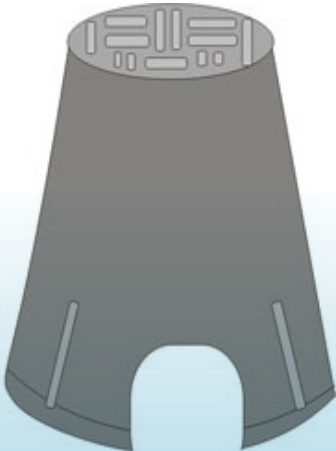


ITEM	PART NUMBER
Air Vent 1" NPT + shradet (seals from 5-110 psi)	9500025
Box, air vent 6"	9500026
Valve inline fits 1/2" dripline (not pictured)	9500027

AIR VACUUM SPECIFICATION

The air vacuum relief valve provides instant and continuous vacuum relief and non-continuous air relief. Both the body and the removable dirt cover are constructed of molded plastic. The body and the dirt cover are connected with a 3/4 inch hose thread. The ball is constructed of low density plastic and the internal seat is constructed of vinyl. The air vacuum relief valve seals at 5 psi. The inlet size is a 1 inch male pipe thread.

Air Vacuum Breaker Box



Pressure Gauge

Liquid Filled Pressure gauge

ITEM	PART NUMBER
Pressure Gauge -1/4" NPT lower mount	9500028



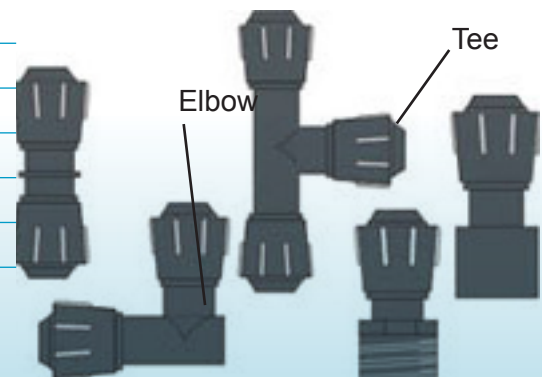
Ball Valves

ITEM	PART NUMBER
True Union Ball Valve PVC/Viton - 1/2"	9500029
True Union Ball Valve PVC/Viton - 3/4"	9500030
True Union Ball Valve PVC/Viton - 1"	9500031
True Union Ball Valve PVC/Viton - 1 1/4"	9500032
True Union Ball Valve PVC/Viton - 1 1/2"	9500033
True Union Ball Valve PVC/Viton - 2"	9500034
True Union Ball Valve PVC/Viton - 3"	9500035



Geoflow Lockslip Fitting

ITEM	PART NUMBER
Adapter. 1/2" SLIP x 1/2" Wasteflow dripline	9500041
Adapter. 3/4" MPT x 1/2" Wasteflow dripline	9500042
Tee. Fits 1/2" Wasteflow dripline	9500043
Elbow. Fits 1/2" Wasteflow dripline	9500044
Coupling. Fits 1/2" Wasteflow dripline	9500045



ITEM	PART NUMBER
Controller, Drip Line 115V 1-Zone Auto, 1 pump	1970001
Controller, Drip Line 115V 1-Zone Manual, 1 pump	1970002

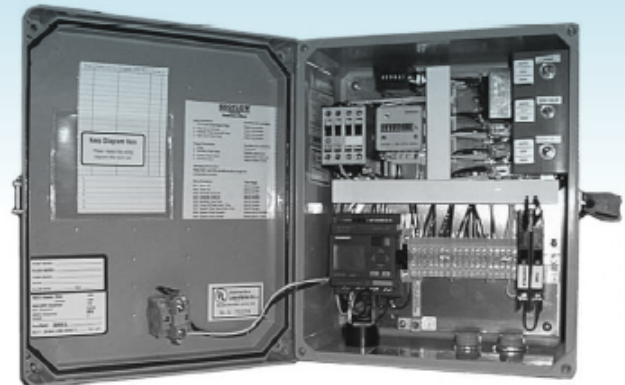
These controllers are the brain in the system, utilizing a programmable logic controller (PLC) to activate the pumps cycles, zone valves and flush valves when needed. All Geo controllers have the following built-in log functions:

- Elapsed time meter (ETM)
- Pump events
- Peak timer events
- High level alarm events
- Power failure events

GEO1 MANUAL CONTROLLERS

The Primary Timer (float 2 activated) controls the pump dose cycle during normal operating conditions. During high flow conditions the pump dosing cycles will be controlled by the Peak Timer (float 3 activated). The Peak Timer off is typically set to trigger more frequent flow than the Primary Timer off setting. Pump dosing cycles are controlled by the timers when the H-O-A switch is in the auto position. Under normal conditions the Primary Timer (float 2) will control the pump(s). During high flow conditions, the Peak Timer (float 3) will control the pump(s). The Peak Timer will cycle the pump more frequently than the Primary Timer (field adjustable). The pump will dose for the same amount of time as it does when operated by the Primary Timer but the time in between doses, or the Peak timer “off time”, will be 75% of that of the Primary Timer “off time”. Factory settings (field adjustable) are 1 hr. 55 minutes off and 5 minutes on for Primary Timer and Peak Timer is set to 1 hr. 25 minutes off (1 hr. 55 minutes x 75%) and 5 minutes on. Consequently peak doses are more frequent than normal.

Hydraulically activated zone valve(s) will index each time the PLC calls for a dose. Each time the pump is called for another zone is dosed. The controller does not dose all zones sequentially as “one” dose and ignores the fact that there are multiple zones for the purpose of dosing. For example if the Primary Timer is programmed to be off for 1 hour, on for 5 minutes and there are four zones, each zone will get 6 doses - five minutes in length - in a 24-hour period. The controller will dose a single zone every hour and will not dose all zones every hour.



Geoflow drip line control panel

GEO1 AUTOMATIC CONTROLLERS

The Primary Timer (float 2 activated) controls the pump dose cycle during normal operating conditions. During high flow conditions the pump dosing cycles will be controlled by the Peak Timer (float 3 activated). This allows one pump to be taken out of service for maintenance without affecting the operation of the system. The Vortex Filter flush valve will open for 15 seconds (field adjustable) at the end of the pump cycle to allow the filter to self-flush. When the vortex filter flush is complete, the filter flush valve will close and the system drain function will begin. Pump dosing cycles are controlled by the timers when the H-O-A switch is in the auto position. Under normal conditions the Primary Timer (float 2) will control the pump. During high flow conditions, the Peak Timer (float 3) will control the pump. The Peak Timer will cycle the pump more frequently than the Primary Timer. The pump will dose for the same amount of time as it does when operated by the Primary Timer but the time in between doses, or the Peak Timer “off time”, will be 75% that of the Primary Timer “off time”. Factory settings (field adjustable) are 1 hour 55 minutes off and 5 minutes on for Primary Timer and Peak Timer is set to 1 hour 25 minutes off (1 hour 55 minutes x 75%) and 5 minutes on. Zone valve(s) will open when the PLC calls for a dose or flush. After the pump is deactivated the electrically activated solenoid flush valve will remain open for five minutes (field adjustable) to allow for drainage of the supply line and return line. If hydraulically activated index valve is used, be sure to drain the supply line in freezing climates.

K-Rain Indexing Valves

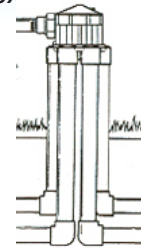
ITEM

PART NUMBER

Indexing Valve, 4 Outlet Indexing - No Cam (4400)	9500046
Indexing Valve, 4 Outlet Indexing - Cammed for 2 zones	9500047
Indexing Valve, 4 Outlet Indexing - Cammed for 3 zones	9500048
Indexing Valve, 4 Outlet Indexing - Cammed for 4 zones	9500049
Replacement Cam 2 zone, 4 outlet	9500050
Replacement Cam 3 zone, 4 outlet	9500051
Replacement Cam 4 zone, 4 outlet	9500052
Indexing Valve, 6 Outlet Indexing - Cammed for 5 zones	9500053
Indexing Valve, 6 Outlet Indexing - Cammed for 6 zones	9500054

HOW IT WORKS

Indexing valves are an economical and reliable method for creating automated dosing of multiple zones. With one input and multiple outputs, each time the pressure is applied and removed the valve indexes to the next zone. This approach reduces control panel costs and complexity.



Sample Installation



Standard Indexing Valve

The standard indexing valve offers a reliable and economical way to automate multiple zoned systems. The simplicity of design and a minimum of moving parts ensures ease of maintenance and a long life.

FEATURES

- ABS Polymer Construction - High strength, non-corrosive body for long life
- Operates at 10 GPM at pressures of 25 - 75 PSI



Premium Indexing Valve

The premium indexing valve offers exceptional reliability and durability even under the dirtiest water conditions. With a metal die-cast body, the premium indexing valves are capable of high pressure applications and are recommended for use on pump fed systems.

FEATURES

- Metal Die-Cast Body - Durable, long lasting
- Operates at 15 GPM at pressures of 25 - 150 PSI
- Built in vacuum breaker releases any vacuum between the valve and pump at shutdown

ITEM

PART NUMBER

Indexing Valve, Premium Four Outlet Indexing - Cammed for 2 zone operation	9500055
Indexing Valve, Premium Four Outlet Indexing - Cammed for 3 zone operation	9500056
Indexing Valve, Premium Four Outlet Indexing - Cammed for 4 zone operation	9500057
Indexing Valve, Premium Six Outlet Indexing - Cammed for 5 zone operation	9500058
Indexing Valve, Premium Six Outlet Indexing - Cammed for 6 zone operation	9500059

K-Rain RCW Sprinkler Heads

<i>ITEM</i>	<i>PART NUMBER</i>
Sprinkler Head RCW 3" pop-up (Special Order)	9510001
Sprinkler Head RCW 4" pop-up (Special Order)	9510002
Sprinkler Head RCW 6" pop-up (Special Order)	9510003
Sprinkler Head RCW 12" pop-up (Special Order)	9510004
Nozzle (pattern for RCW Sprinkler Heads) (Special Order)	9510005

FEATURES AND BENEFITS

- Available in 3", 4", 6" and 12" Models – Provides flexibility in systems design.
- Stainless Steel Retraction Spring – Provides reliable retraction of the riser in all soil conditions.
- Ratchet Riser – Allows for easy pattern alignment by turning the riser.
- Heavy Duty Wiper Seal – Ensures leak free, full pop-up operation even under low-pressure situations.
- Purple Cap for Reclaimed Water use – Highly visible for identification of reclaimed water systems reducing liability.
- Time Proven Patented Reversing Mechanism - Assures continuous reverse and return...over a 20 year history.
- Ratcheting Riser – Allows for easy adjustment of your left starting position with a simple turn of the riser.
- K-Spray pop-ups are ideal for watering smaller areas, ground cover and shrubs areas.



K-Spray RCW family

PLEASE NOTE:

These sprinkler heads come with standard 360 degree nozzles. Special patterns are available on a special order basis.

K-Rain Pro Plus Sprinkler Heads

ITEM	PART NUMBER
Sprinkler Head, Pro Plus low nozzle (360° adjustable range) 3/4" inlet	9510006
Sprinkler Head, Pro Plus low nozzle High Pop (360° adjustable range) 3/4" inlet	9510007
Sprinkler Head, Pro Plus low nozzle Shrub (360° adjustable range) 3/4" inlet	9510008

FEATURES

- Revolutionary Patented Easy Arc Set – Easily adjusted from the top with a flat blade screwdriver
- 2N1 Adjustable or Continuous Rotation – Provides a full range of adjustment from 40° to a full 360°
- Patented Arc Set Degree Markings – Shows the degree of adjustment with the point of an arrow on the top cover
- Arc Memory Clutch – Returns rotor to its preset position automatically even after being tampered with
- Time Proven Patented Reversing Mechanism – Assures continuous reverse and return...over a 20 year history
- Ratcheting Riser – Easily adjust your left stop position by turning the riser
- Heavy Duty Rubber Cover – Protects against physical injury and reduces liability
- Wide Selection of Nozzles – Including standard and low angle, provides flexibility in system design to achieve matched precipitation
- Optional Check Valve – Prevents low head drainage, saves water and reduces liability

Pro Plus Sprinkler Heads

PROPLUS™ FOR RECLAIMED WATER–11003-RCW

A heavy duty rubber cover protects against physical injury. The purple cover positively identifies reclaimed water and reduces your liability.

PROPLUS™ 12" HIGH POP–11003-HP

Appropriate for medium-to-large landscape areas, the PROPLUS™ HP provides high-level-accuracy in a riser that pops up over your plant material. As with all the members of the PROPLUS™ family, the High Pop provides the patented Arc Set, with the arc of rotation clearly indicated at the top. Fully adjustable from 40° to 360° degrees, the system is adjustable prior to installation and during operation.

PROPLUS™ SHRUB HEAD–11003-SH

All the features of the PROPLUS in a shrub-appropriate size. The PROPLUS™ Shrub Head incorporates 2N1 adjustable or continuous rotation. This innovative component in rotor design provides a full range of adjustment from 40° to 360°, reducing inventory and streamlining contractors' back-office operation.



Polylok Distribution Box

ITEM	PART NUMBER
Plastic Distribution Box - 12"	9520032
Plastic Distribution Box - 20"	9520033

DESCRIPTION - 12" DISTRIBUTION BOX

The Polylok Distribution Box is the most versatile box on the market today. You can choose the height that you want your inlets and outlets to be. It also comes complete with the only seal on the market that accepts 2", 3", 4" and corrugated pipe. No more different fittings to inventory! It also comes with stabilizing feet to anchor the box.

FEATURES

- Use as Rain Drain, D-Box, or Drop Box; allows for all configurations
- Use as a rain drain for gutters, driveways & sub surface drainage
- Use as a distribution box or drop box for onsite septic systems
- Use with the 12" riser to bring cover or grate to grade as needed
- Accepts 2", 3", 4" and corrugated pipe
- Use with solid cover or grate, your choice, no additional cost
- Four stabilizing feet with every box



12" Distribution Box

DESCRIPTION - 20" DISTRIBUTION, DRAIN & VALVE BOX

We have the solution to all of your drainage needs with our new 20" Drain, Valve, & Meter Box! This box is great for large applications such as golf courses but is also a suitable size for the home. There's no need to worry about different colored fittings or plugs to inventory because as well as accepting 2", 3" & 4" pipe, our box can also accept 6" pipe. Our 20" Drain Box will also accept our 20" Risers so you can easily bring the Drain Box to grade. It is the most versatile Drain Box available on the market today!

FEATURES

- One seal accepts 2", 3" & 4" (Schedule 40 and SDR 35) pipe
- 6" seal available
- No different colored fittings or plugs to inventory
- Flat cover or grate included
- 20" D-box can be used as a valve or meter box
- Accepts 20" Polylok Riser to bring to grade
- Optional Baffle available
- Accepts 6" pipe



20" Distribution, Drain & Valve Box

Polylok Risers & Covers

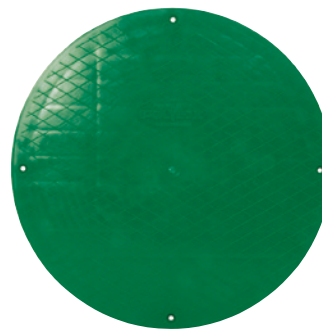
ITEM	PART NUMBER
Plastic Riser 12 inch x 6 inch	9520013
Plastic Cover or Grate 12 inch	9520014
Plastic Riser 6 inch x 20 inch	9520015
Plastic Riser 12 inch x 20 inch	9520016
Plastic Cover 20 inch	9520017
Plastic Cover or Grates 20 inch flat	9520018
Plastic Adapter Rings	9520019
Plastic Riser 24 inch x 6 inch	9520020
Plastic Riser 24 inch x 12 inch	9520021
Plastic Cover 24 inch	9520022
Heavy Duty Plastic Cover 24 inch	9520023
Stainless steel screws	9520024



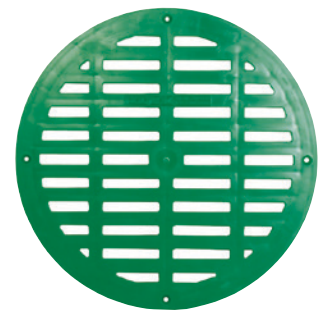
12 x 6 riser

FEATURES

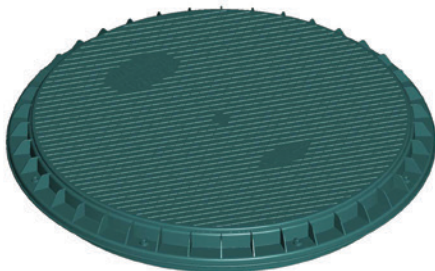
- Watertight and airtight
- Allows tank to be easily vacuum or water tested
- Highest UV-Ray Protection on the market today
- Easy to bring access to grade
- Made of High Density Polyethylene which won't shatter like some Polypropylene risers
- Structural ribs inside prevent frost from adhering to the riser in frost prone areas



Plastic Cover



Plastic Grate



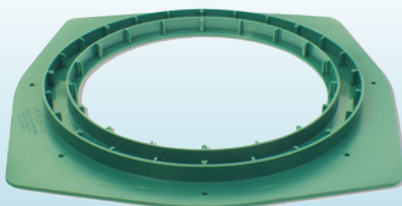
HD Cover



24 inch riser



Riser 6 x 20 with cover



Adapter Rings



12 inch riser

Red Jacket Submersible Pumps

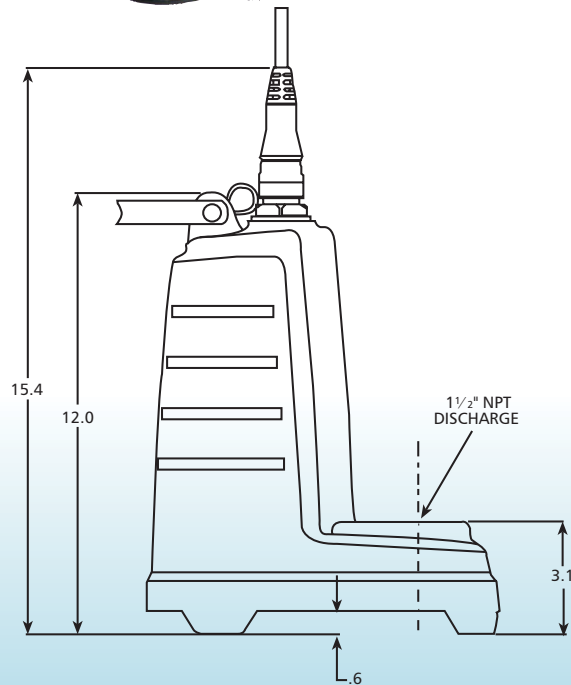
ITEM

Economy Submersible Effluent Pump -1/2 HP

PART NUMBER

953001

Model REP5 Submersible Effluent Pump



APPLICATION

Mound systems, effluent dosing, low pressure pipe, heavy duty sump or dewatering systems

REP5 PUMP

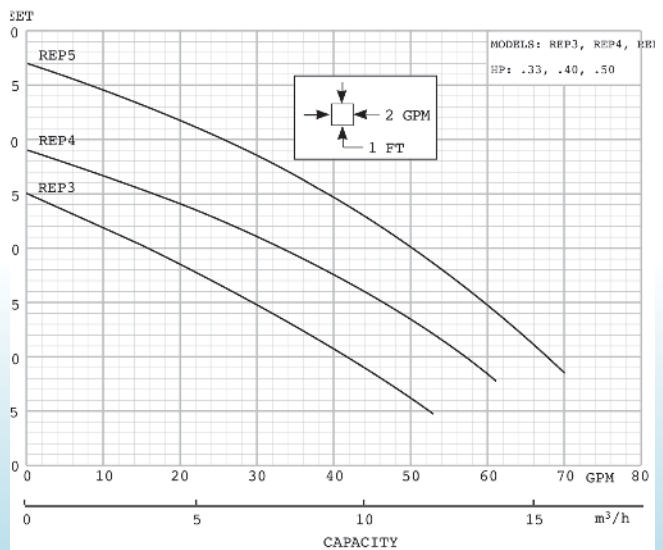
- Max. Capacity: 70 GPM
- Max. Head: 37' TDH
- 1/2 HP, 115 and 230 V

MATERIALS OF CONSTRUCTION

Cast iron, thermoplastic and stainless steel

FEATURES

- Continuous duty, oil-filled, single phase motors
- Built-in venting - no need to drill vent hole in pipe
- Handles 1/2" solids for use as a sump or effluent pump
- Carbon, ceramic, BUNA mechanical seal
- Quick Disconnect 20' power cord
- Discharge: 1-1/2" NPT



Red Jacket Submersible Pumps

ITEM

Submersible Effluent Pump - 1/2 HP

PART NUMBER

953002

2EP Submersible Effluent Pump

FEATURES

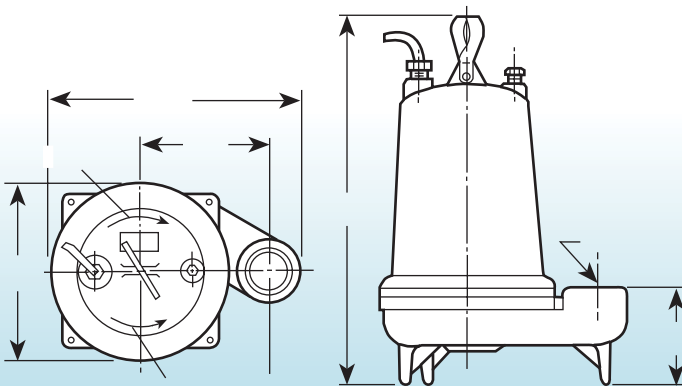
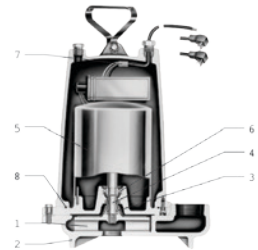
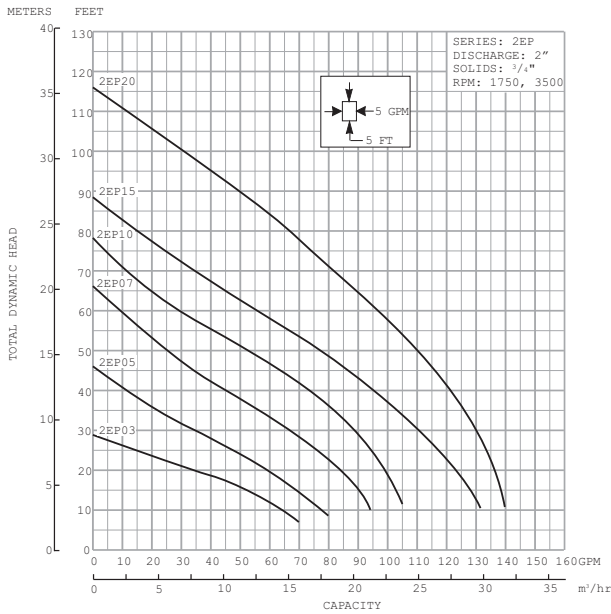
- Cast iron, semi-open, non-clog impeller with pump out vanes for mechanical seal protection.
- Cast iron volute type casing for maximum efficiency.
- Silicon carbide vs. silicon carbide seal faces.
- Stainless steel corrosion resistant shaft. Threaded design. Locknut on three phase models to guard against component damage on accidental reverse rotation.

SPECIFICATIONS

- HP - 0.5
- Phase - 1
- Volts - 115
- RPM - 3450
- Impeller Diameter (in.) - 3.56
- Max Amps - 14.5
- LRA - 46
- KVA Code - M
- Full Load Motor Eff. - 54
- Resistance
 - Start - 7.5
 - Line-Line - 1
- Wt (lbs.) - 60

APPLICATIONS

- Effluent systems
- Homes
- Farms
- Trailer courts
- Motels
- Schools
- Hospitals
- Industry



Red Jacket Submersible Pumps

ITEM

Utility Pump - 1/2 HP

PART NUMBER

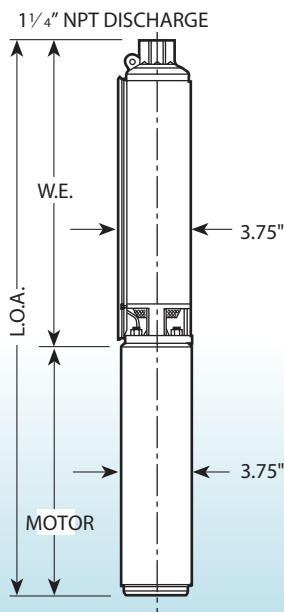
953003

Utility Pump Models E518

Red Jacket Water Products Utility Pumps are specifically designed to handle your toughest effluent applications. The 518 model utility pumps come equipped with a 1/2 hp, 115 volt, Franklin Electric NEMA standard motor and a removable pump end for quick and easy service. A strainer gives the Red Jacket Utility pump added protection against blockage. The Utility Pump can handle solids up to 1/6" inch in diameter.

The model 518 pump has an optimum performance of 18 gpm, giving you greater flow on more demanding

Dimensions (in inches)	
Discharge	1 1/4" NPT
Pump O.D.	3.75"
W.E. Length	610 - 13.6"
	518 - 11.5"
Motor Length	9.53"
LOA	610 - 23.1"
	518 - 21"



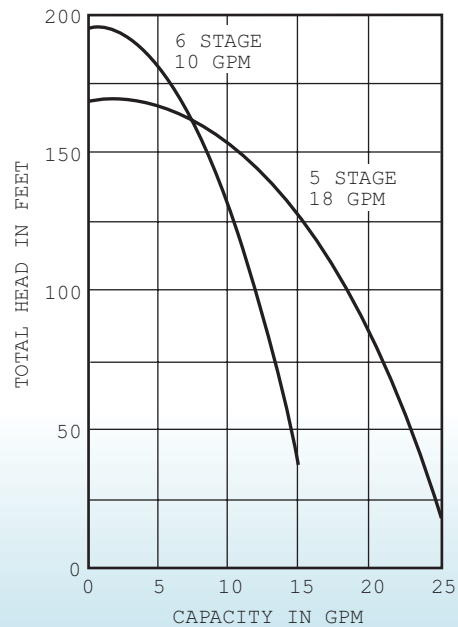
Model E518 Utility Pump

FEATURES AND BENEFITS

- Nylon impact and corrosion resistant discharge head and base.
- Pump shell constructed with a press and roll process for better performance.
- 303 Stainless steel shaft/coupling provides greater power transfer.
- 303 Stainless pump and motor for maximum corrosion resistance.

APPLICATIONS

- Effluent
- Aeration
- Cistern
- Irrigation



Red Jacket Submersible Pumps

ITEM

Submersible Sewage Pump - 1/2 HP

PART NUMBER

953004

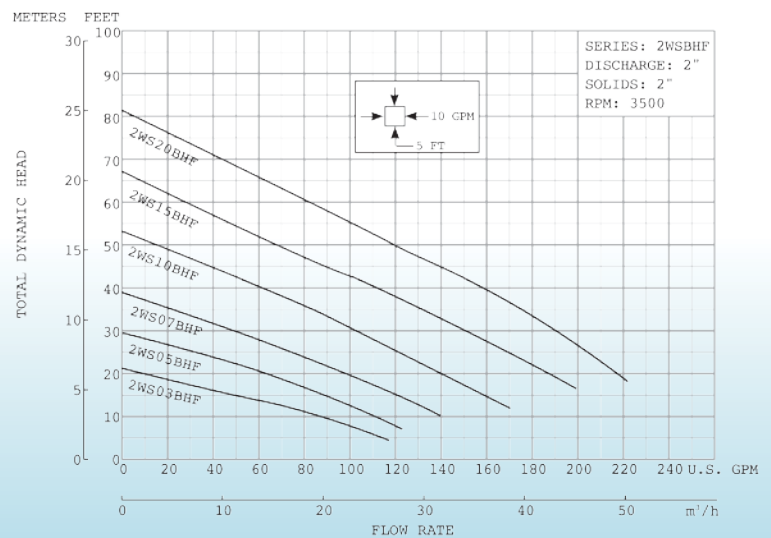
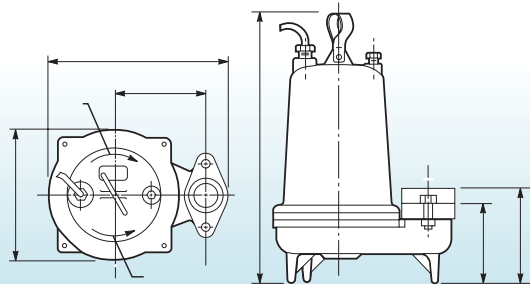
Submersible Sewage Pump

FEATURES AND BENEFITS

- Impeller: Cast iron, enclosed, non-clog, dynamically balanced with pump out vanes for mechanical seal protection
- Casing: Cast iron flanged volute type for maximum efficiency. Designed for easy installation on A10-20 slide rail
- Mechanical Seal: Silicon Carbide vs. Silicon Carbide sealing faces for superior abrasive resistance, stainless steel metal parts, BUNA-N elastomers
- Shaft: Corrosion resistant, 300 series stainless steel. Threaded design. Locknut on all models to guard against component damage on accidental reverse rotation
- Fasteners: 300 series stainless steel
- Capable of running dry without damage to components
- Designed for continuous operation, when fully submerged



2WS BHF Sewage Pump



Polylok Seals & Mandrels

ITEM	PART NUMBER
Poly Seal I Low Pressure	9520001
Poly Seal II High Pressure	9520002
Mandrels (for Seal I & II)	9520003
Mandrels (Boot Seals Poly IV High Pressure)	9520006

DESCRIPTION - POLY SEAL I LOW PRESSURE

Eliminate grouting around the pipe. This design promotes quick and easy conversion to any existing form. Low pressure pipe seals can be used in any low pressure application. It's time to upgrade your product with the Polylok Pipe Seal...your customers will be glad you did.

- Accommodates 2", 3", 4", Schedule 40 & corrugated pipes
- Watertight
- No grouting



Poly Seal I Low Pressure

DESCRIPTION - POLY SEAL II HIGH PRESSURE

Use the Poly II for the Inlet & Outlet pipes on septic tanks, aerobic systems, or anywhere you need water tightness. This new hybrid seal will mount to our existing mandrel that bolts directly to the septic tank form just like the original.

The Poly II will meet the Vacuum & Hydrostatic pressure requirements of A.S.T.M. spec. C-923 for 2", 3" & 4" Schedule 40. It will allow you the water tightness that is now required and the flexibility of choosing what size pipe you want.

- Accepts 2", 3" and 4" Schedule 40 and corrugated pipes
- Prevents infiltration and exfiltration
- No grouting for secure pipe connection
- Fits tank walls 2.5"- 6"



Poly Seal II High Pressure

DESCRIPTION - MANDRELS

The mandrels are made from a polypropylene composite which allows the mandrels to maintain their shape even during the most demanding applications. Each time you cast a Polylok Seal into your tank, you can be assured you will get a watertight connection. The mandrels will accommodate 2.5"- 6" wall thickness.



Mandrels

Polylok Boot Seals and Concrete Inserts

<i>ITEM</i>	<i>PART NUMBER</i>
Boot Seal open end Poly IV High Pressure	9520004
Boot Seal closed end Poly IV High Pressure	9520005
Concrete Inserts for grating hinges (star inserts)	8027021
Concrete Inserts for mounting equipment	8027013



BOOT SEAL OPEN END POLY IV HIGH PRESSURE

Open-Ended, High-Pressure, Seal with clamp. This seal meets or exceeds all the ASTM C-923 requirements.

FEATURES

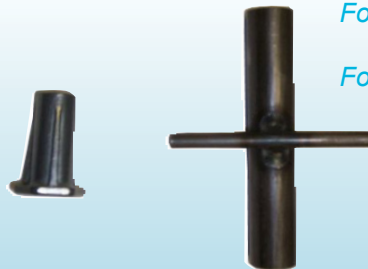
- Fits onto many existing open end boot tank mandrels
- Accepts 4" Schedule 40 or SDR 35 pipe
- Can be cast in walls 2" to 4" in thickness
- Helps to insure a watertight tank

BOOT SEAL CLOSED END POLY IV HIGH PRESSURE

Need to vacuum test or water test your tanks? This is the best seal on the market today for vacuum testing and water testing tanks. It is designed with a closed end, so it is no longer necessary to plug seal holes before testing. And, it's easy to cut the seal at the installation site. In addition, this new seal is longer than our other seals, making it even easier to install.

FEATURES

- Fits onto many existing open-end boot tank mandrels
- Allows tanks to be easily vacuum and water tested
- Accepts 4" Schedule 40 or SDR 35 pipe
- Can be cast in walls 2.5" - 4" in thickness



*Concrete Inserts
For Grating hinges (star inserts)*

For Mounting equipment

Polylok Plastic Wheel Chairs

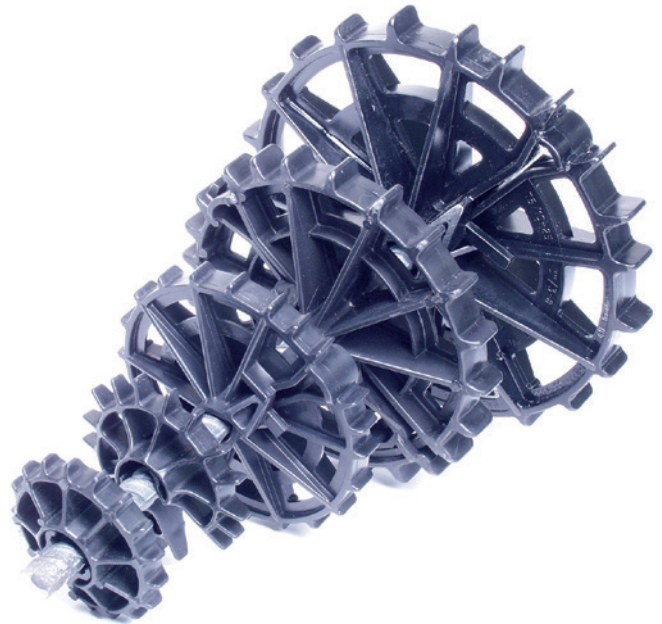
ITEM	PART NUMBER
Plastic Wheel Chairs 7/8 inch	9520007
Plastic Wheel Chairs 1 inch	9520008
Plastic Wheel Chairs 1 inch HD	9520009
Plastic Wheel Chairs 1.5 inch	9520010
Plastic Wheel Chairs 2 inch	9520011
Plastic Wheel Chairs 3 inch	9520012

WHEEL CHAIRS

Polylok chairs can handle any load! Be confident knowing that your rebar will stay where you place it. The strongest 7/8", 1", 1½", 2" and 3" cover chairs for all concrete work including: precast, utility vaults, slabs, barriers, foundation work and bridges. Use one of our Polylok ratchet style chairs instead of three of the competitors.

FEATURES

- Wheel Chairs available in 7/8", 1", 1½", 2" & 3" cover
- 1" for wire mesh to # 4 bar
- 7/8" Cover wire mesh to #3 bar
- Patented locking latch
- Extra heavy duty 1½", 2" and 3" cover. Guaranteed to accept 600 lbs.
- Eliminates at least 33% spacer costs due to superior strength
- Wide web for additional strength



WHEEL CHAIR 1 INCH HD

Polylok's patented wheel chair design has been copied but never matched. They offer the only wheel chair that locks in place and accommodates more than 1 size rebar. Precasters can use these wheel chairs in both horizontal and vertical applications. Polylok is pleased to introduce their new 1" wheel chair that can now accept up to #6 bar.

FEATURES

- 1" LC for #3 - #6 bar
- Eliminates at least 33% spacer costs due to superior strength
- Wide web for additional strength

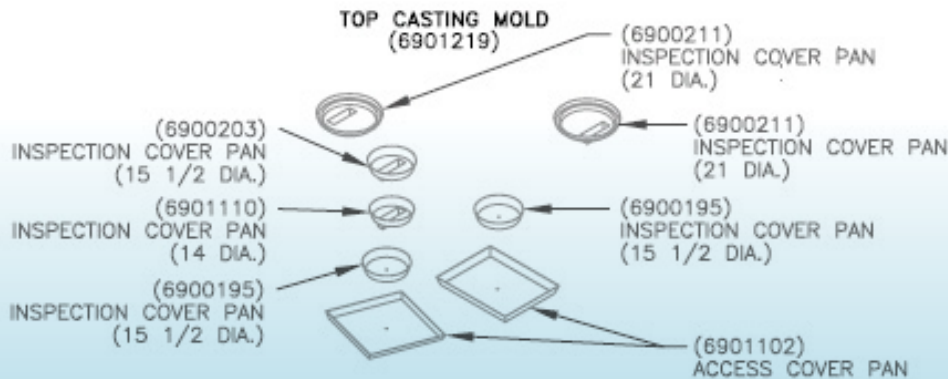


Jet Home and Commercial Molds

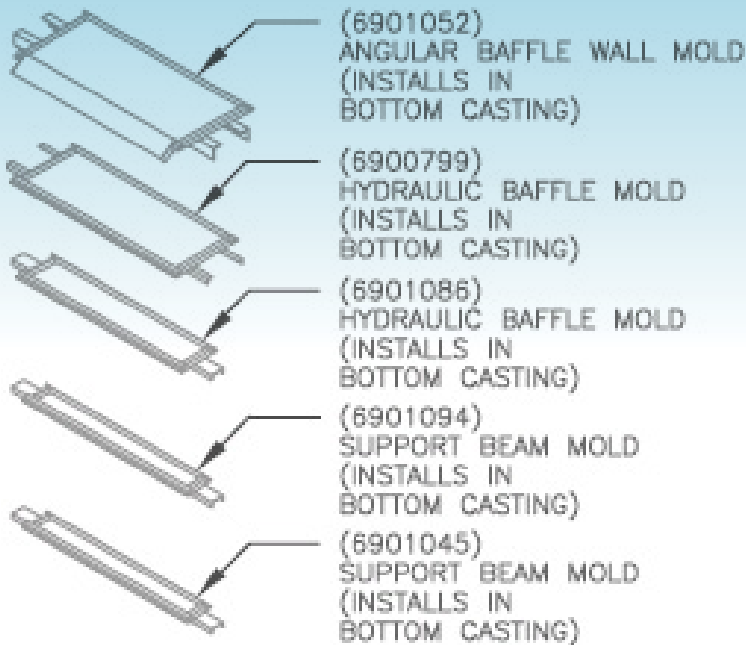
ITEM	PART NUMBER
Jet Home Plant One Piece Mold	6910000
Aerator Mounting Casting Mold	6900526
Extension Riser Mold	6900518
Cover Casting Mold	6900500
Jet Commercial Mold	8900672
Grating Pans - Setting	8900094
Grating Pans - Large Aeration	8900029
Grating Pans - Small Aeration	8900011
Tounge and Groove Pan	8900326
Small Hopper Mold	8900664
Large Hopper Mold	8900680



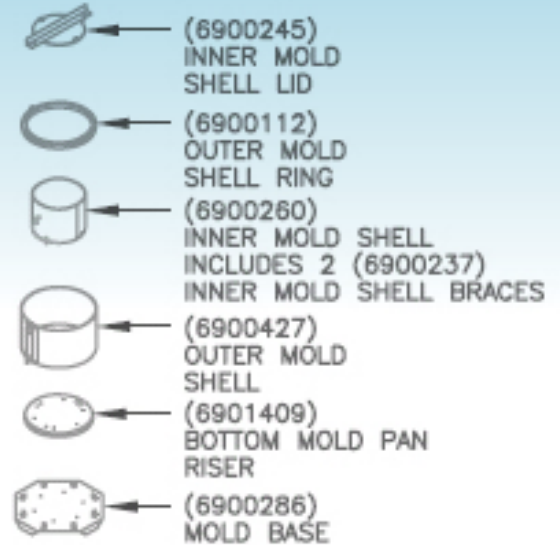
Home Plant Mold



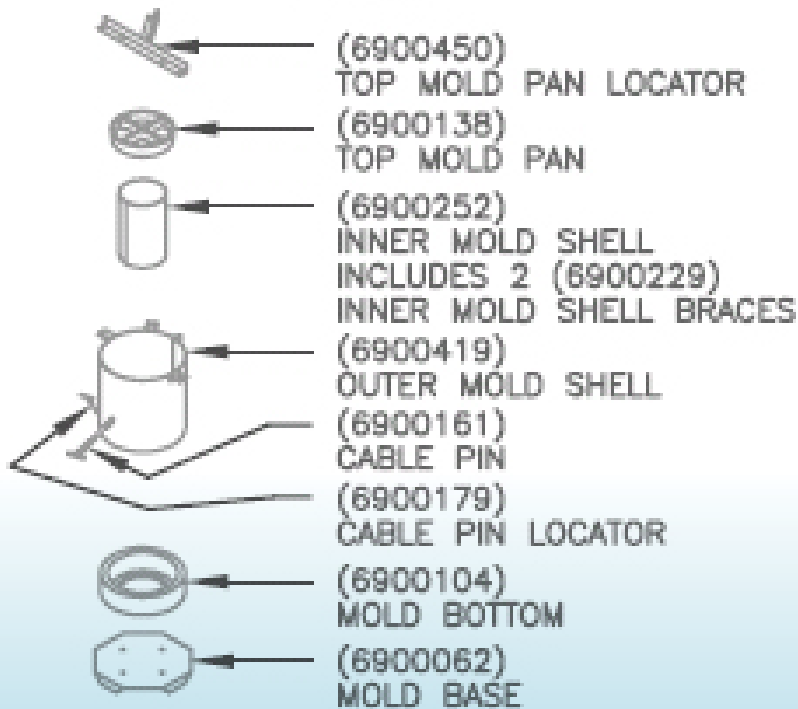
Jet Home and Commercial Molds



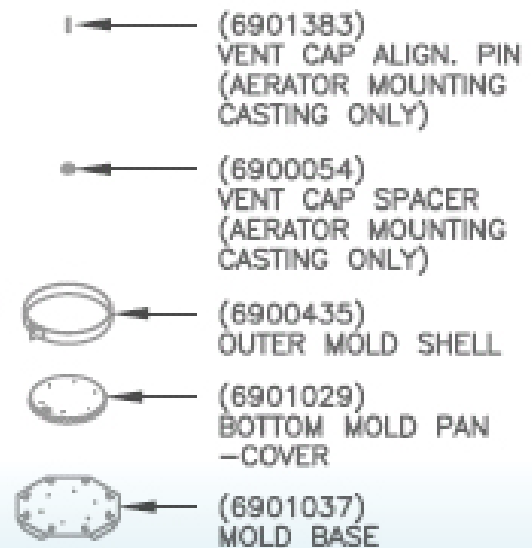
EXTENSION RISER MOLD (6900518)



AERATOR MOUNTING CASTING MOLD (6900526)



COVER CASTING MOLD (6900500)



NOTE:
BOLTS, NUTS, ETC. ARE NOT
SHOWN ON DRAWING BUT ARE
INCLUDED WITH MOLD SET.

Custom Commercial Plants

ITEM

Custom Commercial Plants

PART NUMBER

JCP/000000000



CUSTOM 23,000 GPD COMMERCIAL PLANT



CUSTOM 40,000 GPD COMMERCIAL PLANT

Sludge Judge

ITEM	PART NUMBER	
Sludge Judge	9990116	15-ft., 4.60 m Contains three sections.

The Nasco Sludge Judge® is designed to take accurate readings of settled solids, 5% or less, in a variety of liquids, to any depth. It is ideal for sewage treatment plants, chemical plants, and food processing facilities - anywhere that accurate sample levels of settled solids in noncaustic materials are needed. The unit holds approximately 3 oz. per foot, 89 ml per 0.31 m. The Sludge Judge® comes in 5 ft., 1.53 m sections of 3/4", 1.90 cm plastic pipe with screw-type connectors.

The top section includes a nylon rope for raising and lowering the sampler. Individual sections can be combined as required to achieve the length needed. Do not use in liquids over 165° F, 74° C. Sludge Judge® is not autoclavable.

A convenient cotton canvas carrying case that holds four sections, cleaning brush, cleaning rod, and cotton strips are available.

TO USE:

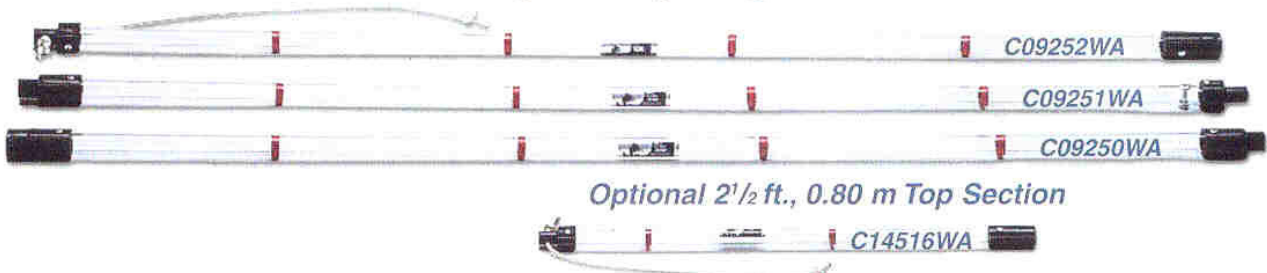
- Slowly lower the Sludge Judge® to the bottom of the tank.
 - The float valve opens (see picture A) allowing materials to flow in. When the bottom has been reached and the pipe has filled to the surface level, tug slightly on the rope as the unit is raised.
 - This sets the check valve (see picture B), trapping the mixture inside.
- When the unit has been raised clear of the liquid, the amount of solids in the sample can be read using the 1 ft., 0.31m increments marked on the pipe sections.
- To release the material in the unit, touch the pin extending from the bottom section against a hard surface. This opens the check valve to drain the sample.

Liquid/Sludge Sampling

Nasco Sludge Judge® Series



The Original Sludge Judge®



Optional 2 1/2 ft., 0.80 m Top Section



**750 Alpha Drive
Cleveland, OH 44143**

**T 800.321.6960
P 440.461.2000
F 440.442.9008**

www.jetincorp.com